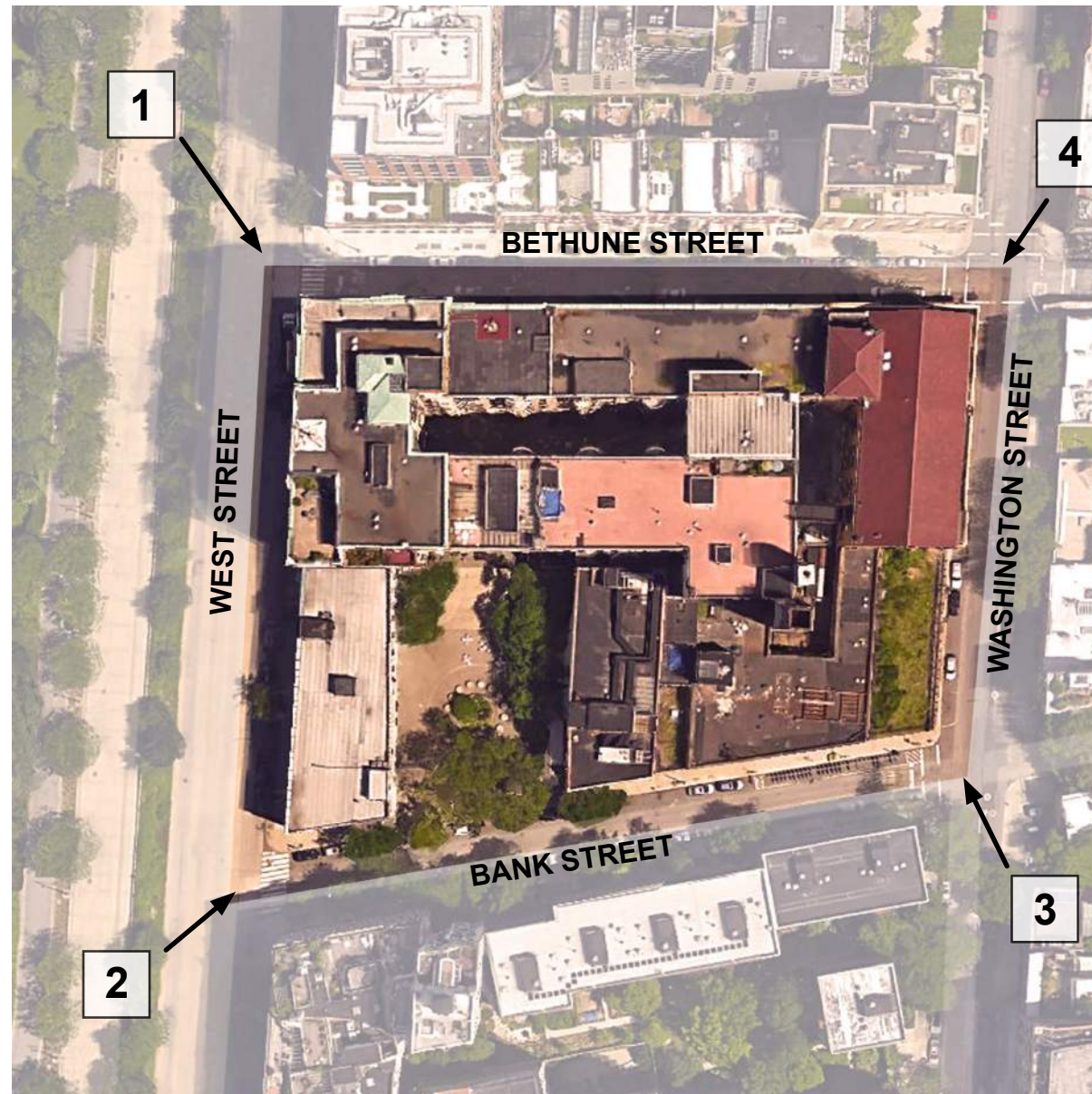


AERIAL VIEWS FROM ALL EXISTING MAIN CORNERS OF WESTBETH COMPLEX



SITE LOCATION

WESTBETH ARTISTS' HOUSING
 463 WEST STREET
 NEW YORK, NY. 10014

PROJECT LOCATION:

BLOCK: 0639
 LOT: 01
 LOT AREA: 96,999 +/- SF
 LOT FRONTAGE: 294 FT
 LOT DEPTH: 374 FT
 NUMBER OF FLOORS: 13
 GROSS FLOOR AREA: 542,808 +/- SF
 RESIDENTIAL UNITS: 384
 TOTAL # UNITS: 384
 ZONING: C6-3
 COMMUNITY BOARD: 102
 CENSUS TRACT: 79

SCOPE OF PROPOSED EXTERIOR WORK AT WEST STREET PASSAGEWAY [SECTION A]:

- REMOVE AND REBUILD EXISTING STAIR TO MATCH EXISTING
- PROVIDE ADA CONCRETE RAMP AT WEST STREET PASSAGEWAY ENTRANCE FROM BOTTOM OF EXISTING CONCRETE STAIR UP TO EXISTING COURTYARD.

ARCHITECT:

PEREZ ARCHITECTURE
 86 34TH STREET, SUITE D-601
 BROOKLYN, NY 11232

PRESERVATION CONSULTANT:

AYON STUDIO
 41 UNION SQUARE WEST
 SUITE 516
 NEW YORK, NY 10003

BUILDING SECTIONS WITHIN THE BELL TELEPHONE LABORATORIES COMPLEX



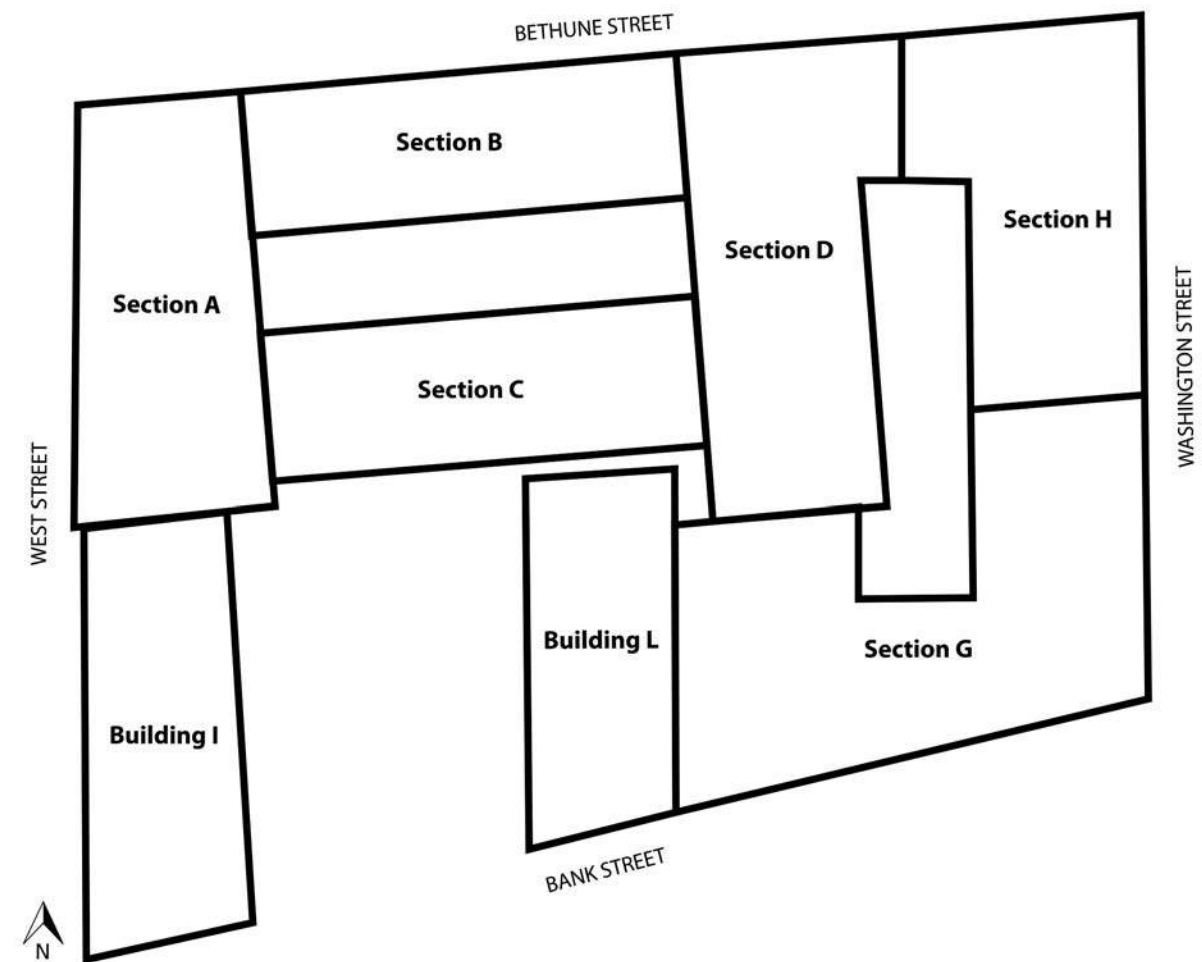
Map Legend
 [Red dashed line symbol] Building sections within the landmark site
 * Note: Map elements may not be to scale.

Note: The building Sections depicted on this map are the historic Section denominations used by the Western Electric Co. and Bell Labs (At the time of designation, Westbeth uses a slightly different Section arrangement).

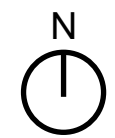
WESTBETH ARTISTS' HOUSING
 463 WEST STREET
 NEW YORK, NY. 10014

BUILDING SECTIONS

NOTE:
 LPC DESIGNATIONS ARE USED
 THROUGHOUT THIS REPORT;
 REFERENCES ON THE CONSTRUCTION
 DOCUMENTS USE THE CURRENT BUILDING
 SECTION ARRANGMENT AS NOTED BELOW:



Westbeth Artists' Housing, Section arrangement used by Westbeth



ARCHITECT:

PEREZ ARCHITECTURE
 86 34TH STREET, SUITE D-601
 BROOKLYN, NY 11232

PRESERVATION CONSULTANT:

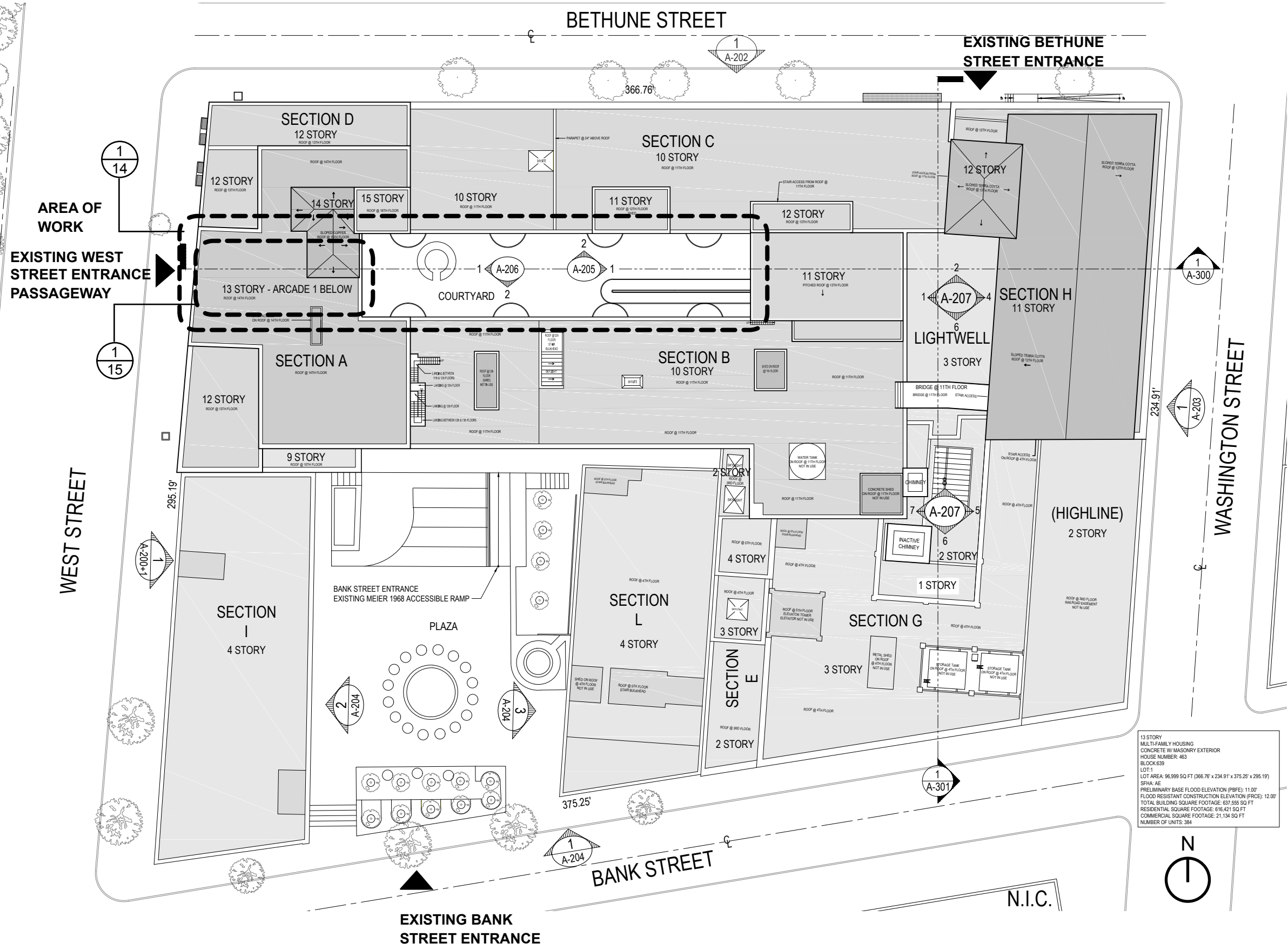
AYON STUDIO
 41 UNION SQUARE WEST
 SUITE 516
 NEW YORK, NY 10003

WESTBETH ARTISTS' HOUSING
 463 WEST STREET
 NEW YORK, NY. 10014

EXISTING SITE PLAN

LEGEND:

▲ EXISTING ENTRANCE



13 STORY
 MULTI-FAMILY HOUSING
 CONCRETE W/ MASONRY EXTERIOR
 HOUSE NUMBER: 463
 BLOCK: 639
 LOT: 1
 LOT AREA: 96,999 SQ FT (366.76' x 234.91' x 375.25' x 295.19')
 SFHA: AE
 PRELIMINARY BASE FLOOD ELEVATION (PBFE): 11.00'
 FLOOD RESISTANT CONSTRUCTION ELEVATION (FRCE): 12.00'
 TOTAL BUILDING SQUARE FOOTAGE: 631,555 SQ FT
 RESIDENTIAL SQUARE FOOTAGE: 616,421 SQ FT
 COMMERCIAL SQUARE FOOTAGE: 21,134 SQ FT
 NUMBER OF UNITS: 384

ARCHITECT:

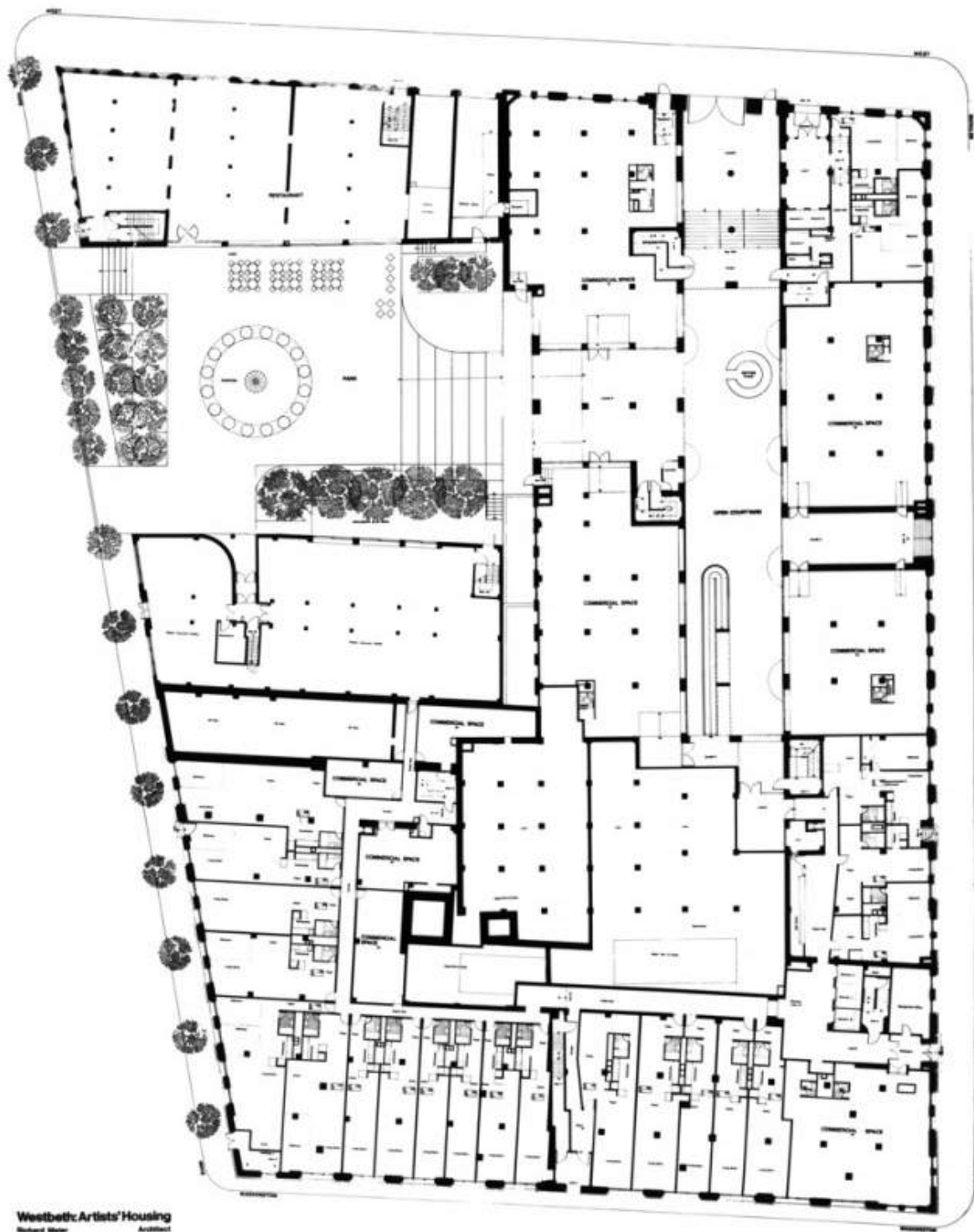
PEREZ ARCHITECTURE
 86 34TH STREET, SUITE D-601
 BROOKLYN, NY 11232

PRESERVATION CONSULTANT:

AYON STUDIO
 41 UNION SQUARE WEST
 SUITE 516
 NEW YORK, NY 10003

WESTBETH ARTISTS' HOUSING
463 WEST STREET
NEW YORK, NY. 10014

RICHARD MEIER PLAN
HISTORIC PHOTOGRAPH



Westbeth Artists' Housing
Richard Meier
Architect

WESTBETH FLOOR PLAN WITH COURTYARD
BY RICHARD MEIER



VIEW OF COURTYARD FROM TOP OF RAMP
PHOTO BY EZRA STOLLER
@ EZRA STOLLER/ESTO

ARCHITECT:

PEREZ ARCHITECTURE
86 34TH STREET, SUITE D-601
BROOKLYN, NY 11232

PRESERVATION CONSULTANT:

AYON STUDIO
41 UNION SQUARE WEST
SUITE 516
NEW YORK, NY 10003

WESTBETH ARTISTS' HOUSING
463 WEST STREET
NEW YORK, NY. 10014

HISTORIC PHOTOGRAPH



ARCHITECT:

PEREZ ARCHITECTURE
86 34TH STREET, SUITE D-601
BROOKLYN, NY 11232

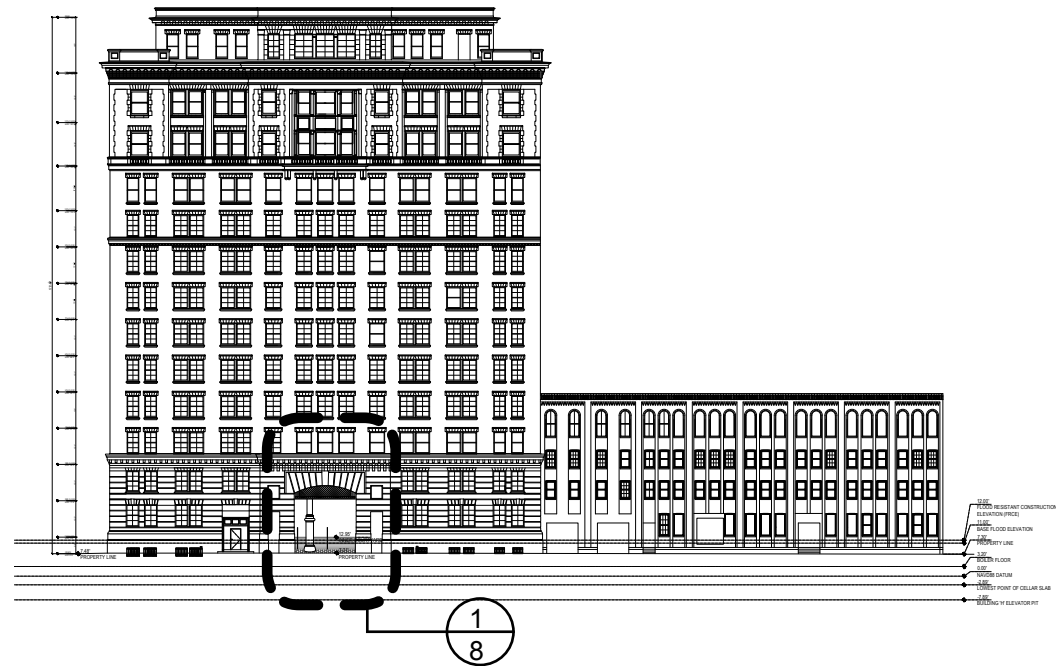
PRESERVATION CONSULTANT:

AYON STUDIO
41 UNION SQUARE WEST
SUITE 516
NEW YORK, NY 10003

VIEW OF COURTYARD FROM WEST STREET PASSAGEWAY
PHOTO BY EZRA STOLLER
@ EZRA STOLLER/ESTO

WESTBETH ARTISTS' HOUSING
 463 WEST STREET
 NEW YORK, NY. 10014

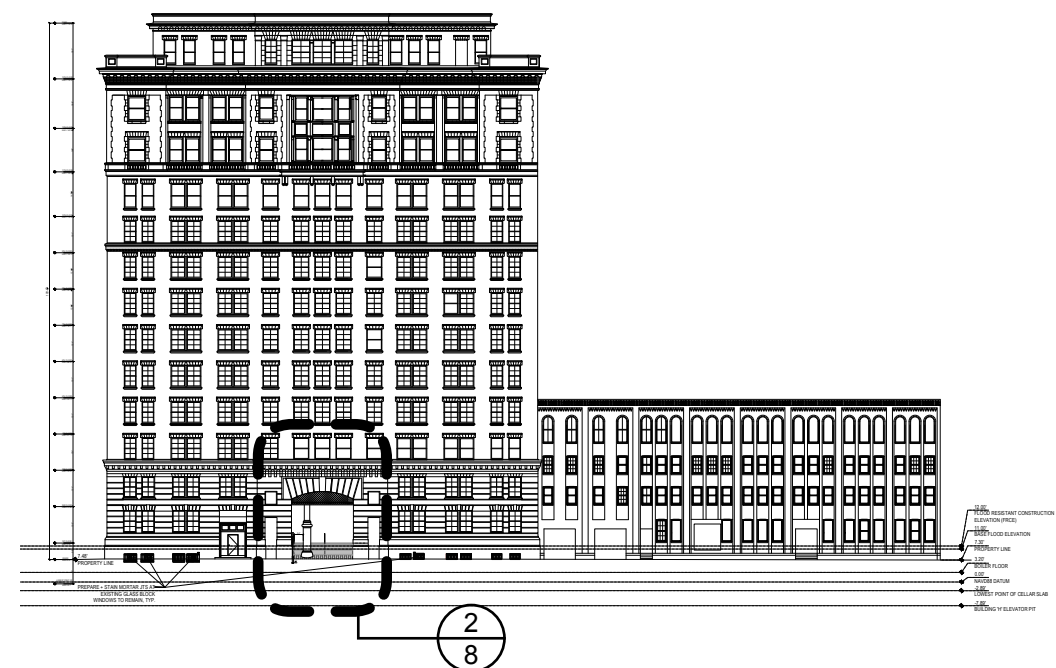
**EXISTING WEST STREET FACADE
 ELEVATIONS AND PHOTOGRAPHS**



EXISTING ELEVATION OF WEST STREET PASSAGEWAY ENTRANCE



EXISTING FACADE FROM OF WEST STREET



PROPOSED ELEVATION OF WEST STREET PASSAGEWAY ENTRANCE - WITH ADA RAMP



EXISTING DECORATIVE GATE - WEST STREET PASSAGEWAY

ARCHITECT:

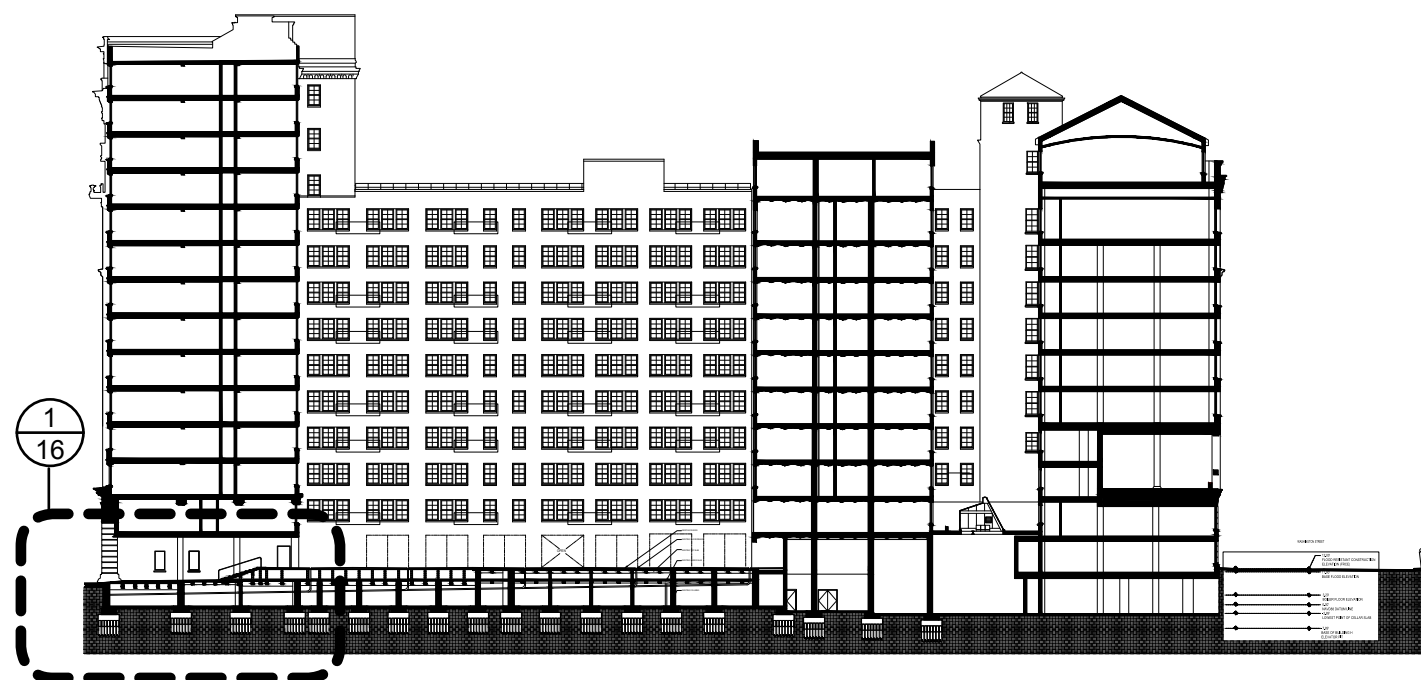
PEREZ ARCHITECTURE
 86 34TH STREET, SUITE D-601
 BROOKLYN, NY 11232

PRESERVATION CONSULTANT:

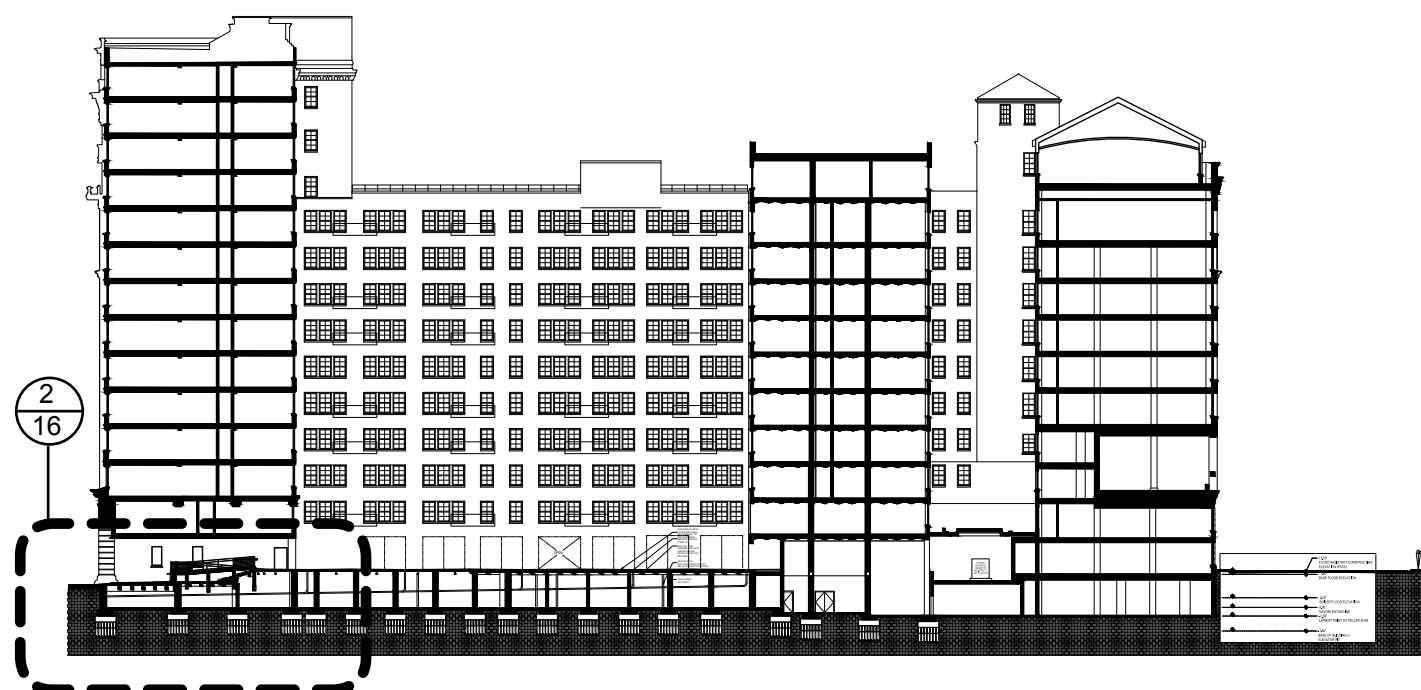
AYON STUDIO
 41 UNION SQUARE WEST
 SUITE 516
 NEW YORK, NY 10003

WESTBETH ARTISTS' HOUSING
 463 WEST STREET
 NEW YORK, NY. 10014

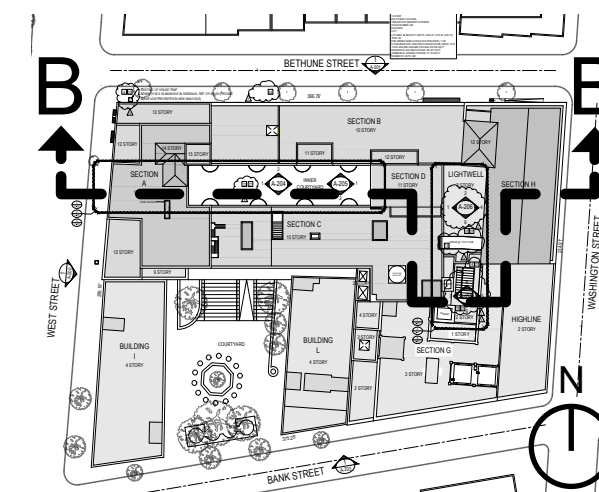
**EXISTING + PROPOSED
 LONGITUDINAL BUILDING
 SECTIONS B-B**



EXISTING LONGITUDINAL SECTION - B



PROPOSED LONGITUDINAL SECTION - B



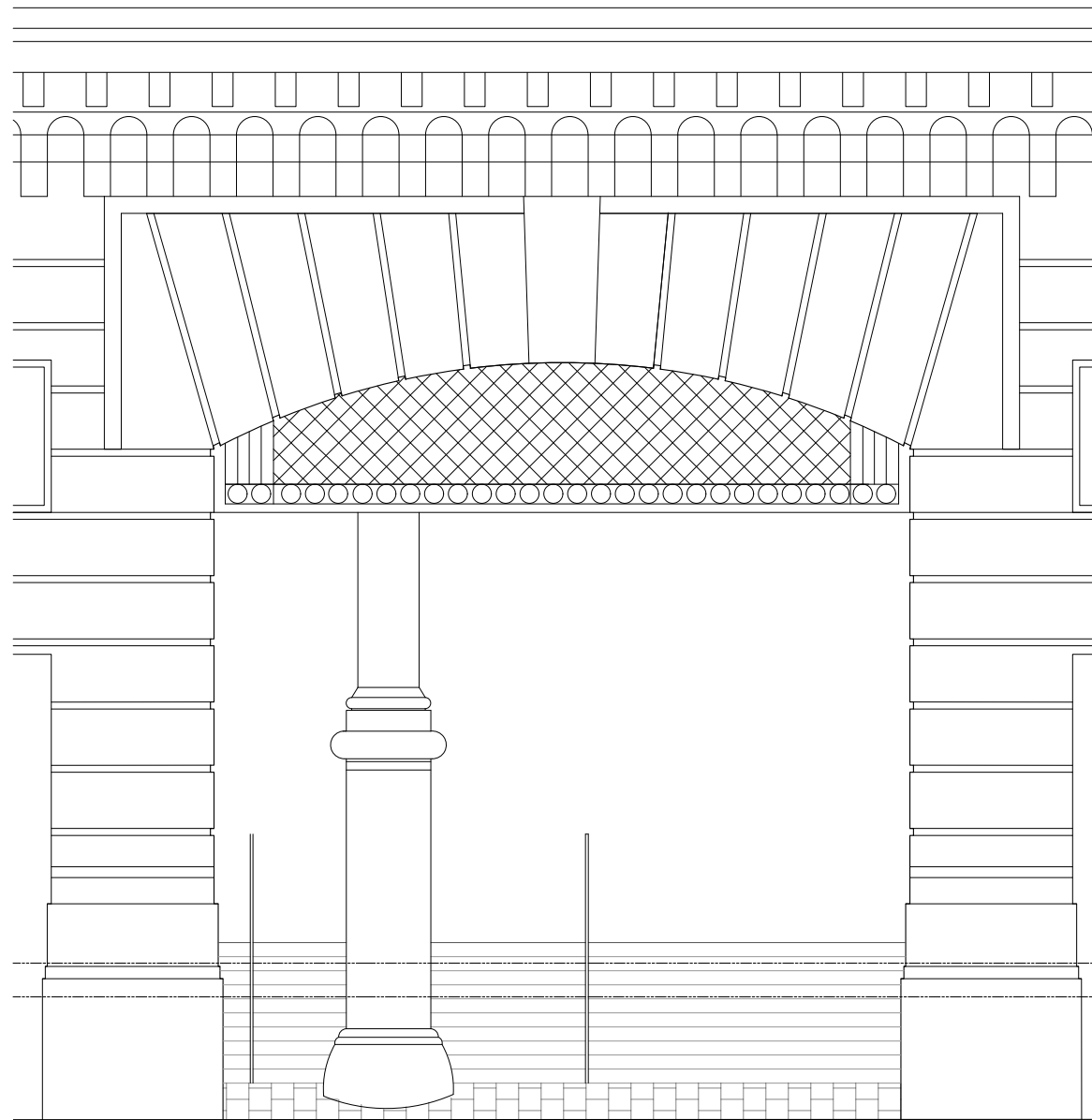
ARCHITECT:

PEREZ ARCHITECTURE
 86 34TH STREET, SUITE D-601
 BROOKLYN, NY 11232

PRESERVATION CONSULTANT:

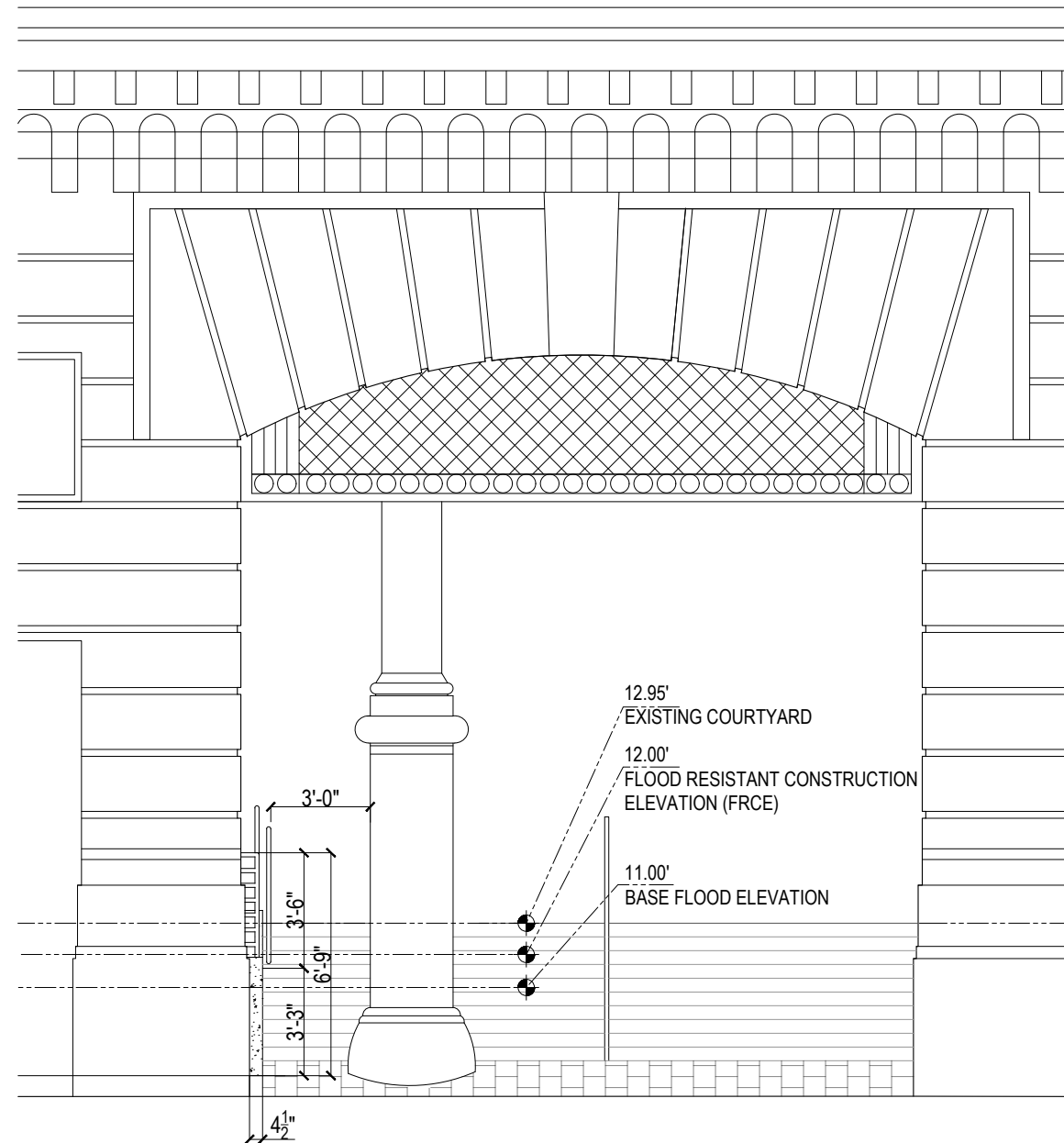
AYON STUDIO
 41 UNION SQUARE WEST
 SUITE 516
 NEW YORK, NY 10003

**WEST STREET ENTRANCE
 EXTERIOR ELEVATIONS:**



NOTE: EXISTING DECORATIVE IRON GATES NOT SHOWN FOR CLARITY

1/8 - ENLARGED ELEVATION OF EXISTING WEST STREET PASSAGEWAY ENTRANCE



NOTE: EXISTING DECORATIVE IRON GATES NOT SHOWN FOR CLARITY

2/8 - ENLARGED ELEVATION OF PROPOSED WEST STREET PASSAGEWAY ENTRANCE
 (WITH ADA RAMP)

ARCHITECT:

PEREZ ARCHITECTURE
 86 34TH STREET, SUITE D-601
 BROOKLYN, NY 11232

PRESERVATION CONSULTANT:

AYON STUDIO
 41 UNION SQUARE WEST
 SUITE 516
 NEW YORK, NY 10003

WESTBETH ARTISTS' HOUSING
463 WEST STREET
NEW YORK, NY. 10014

**EXISTING AND PROPOSED AT
WEST STREET ENTRANCE**



1/9 - EXISTING WEST STREET ENTRANCE



2/9 - PROPOSED WEST STREET ENTRANCE WITH ADA RAMP

ARCHITECT:

PEREZ ARCHITECTURE
86 34TH STREET, SUITE D-601
BROOKLYN, NY 11232

PRESERVATION CONSULTANT:

AYON STUDIO
41 UNION SQUARE WEST
SUITE 516
NEW YORK, NY 10003

**EXISTING AND PROPOSED
PASSAGEWAY AT
WEST STREET ENTRANCE**



1/10 - EXISTING PASSAGEWAY



2/10 - PROPOSED PASSAGEWAY WITH ADA RAMP

ARCHITECT:

PEREZ ARCHITECTURE
86 34TH STREET, SUITE D-601
BROOKLYN, NY 11232

PRESERVATION CONSULTANT:

AYON STUDIO
41 UNION SQUARE WEST
SUITE 516
NEW YORK, NY 10003



1/11 - EXISTING PASSAGEWAY VIEW FROM COURTYARD



2/11 - PROPOSED PASSAGEWAY VIEW FROM COURTYARD WITH NEW RAMP

ARCHITECT:

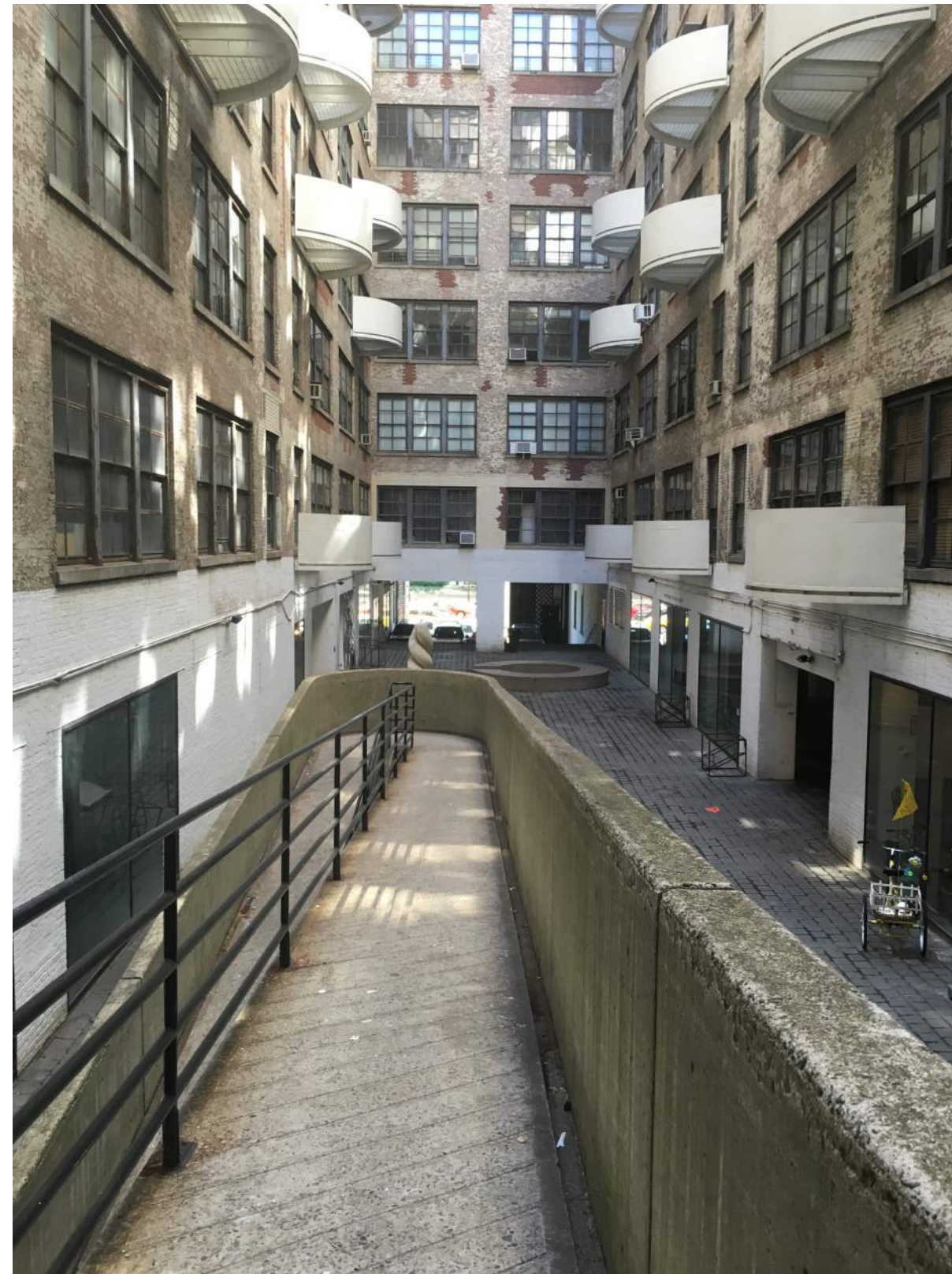
PEREZ ARCHITECTURE
86 34TH STREET, SUITE D-601
BROOKLYN, NY 11232

PRESERVATION CONSULTANT:

AYON STUDIO
41 UNION SQUARE WEST
SUITE 516
NEW YORK, NY 10003

WESTBETH ARTISTS' HOUSING
463 WEST STREET
NEW YORK, NY. 10014

EXISTING COURTYARD
[SECTIONS A, B, C + D]



CLOSE UP VIEW OF EXISTING ASPHALT PAVERS



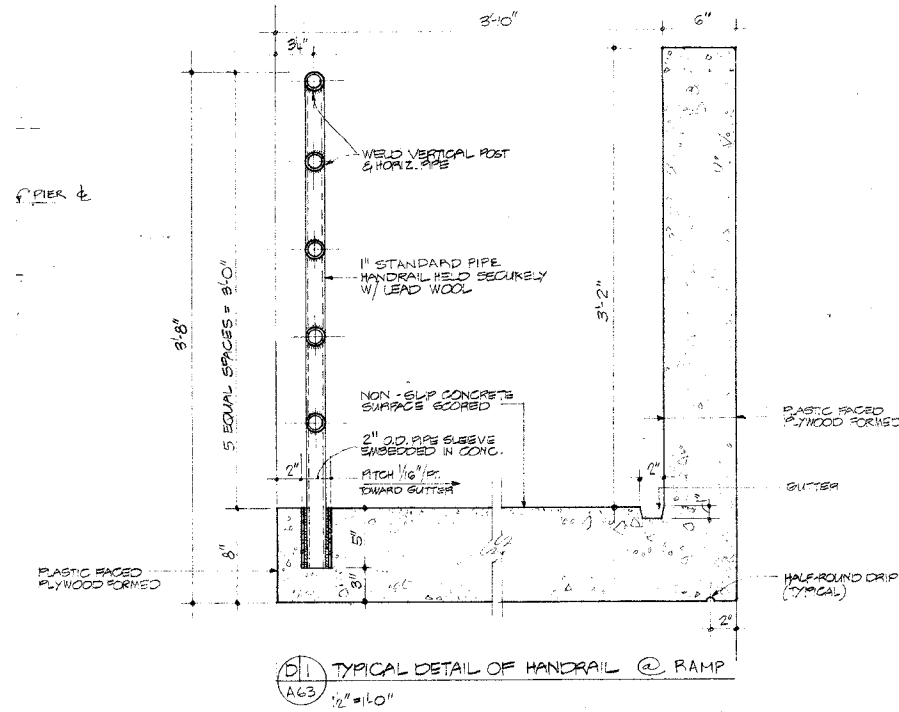
ARCHITECT:

PEREZ ARCHITECTURE
86 34TH STREET, SUITE D-601
BROOKLYN, NY 11232

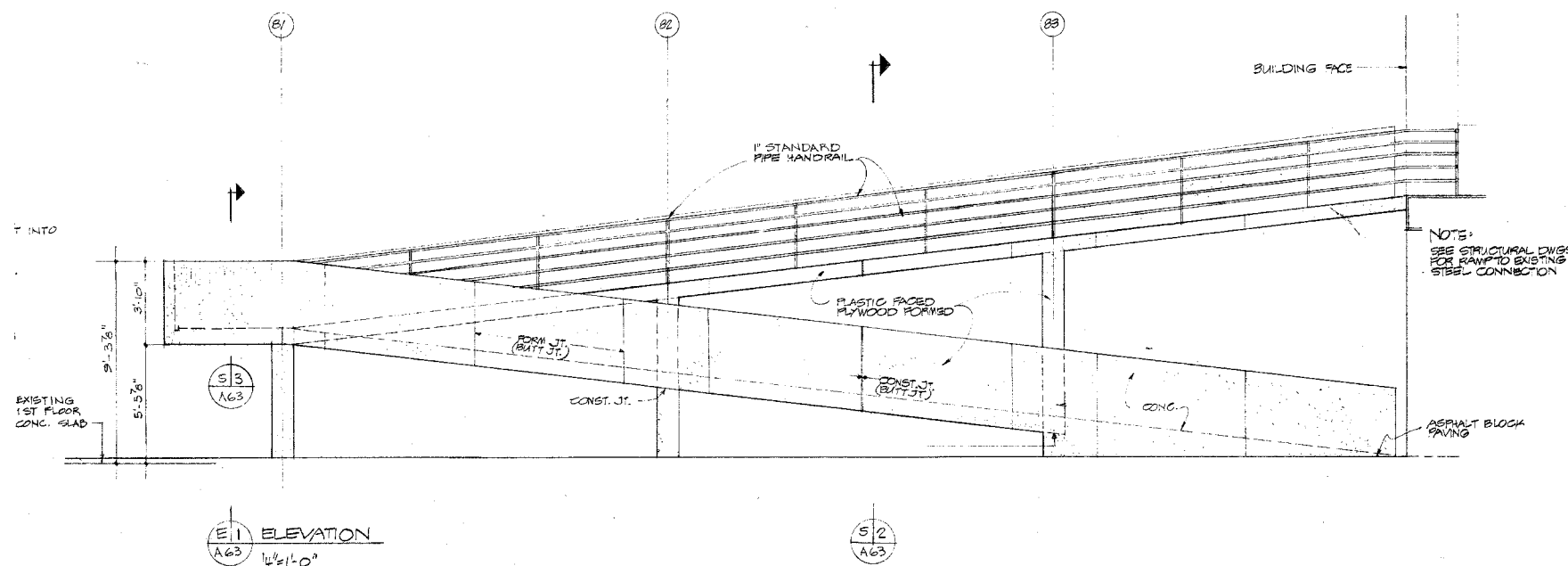
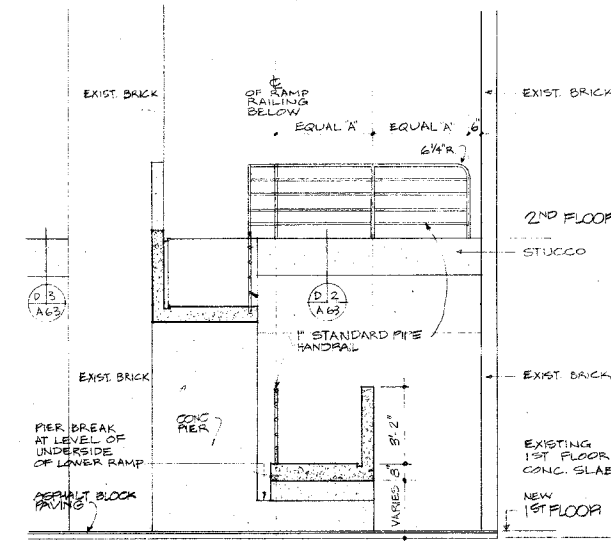
PRESERVATION CONSULTANT:

AYON STUDIO
41 UNION SQUARE WEST
SUITE 516
NEW YORK, NY 10003

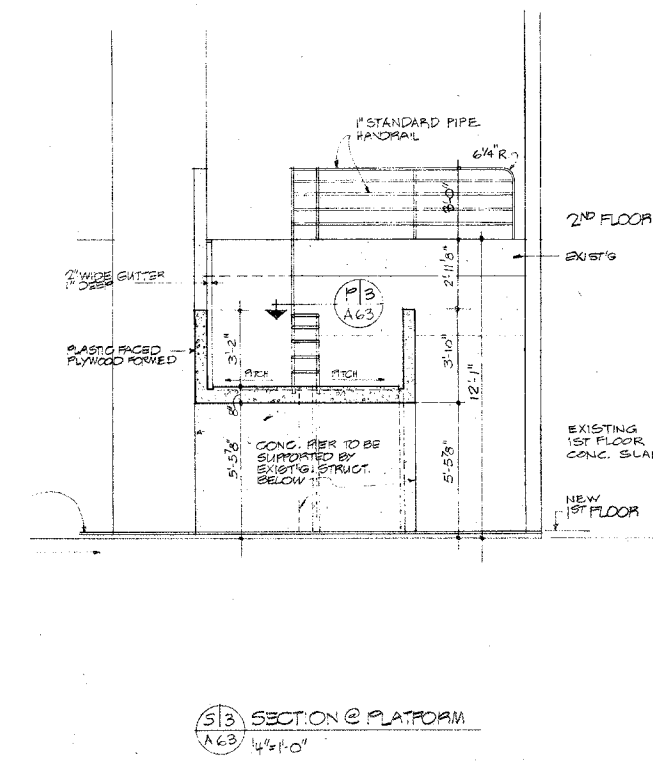
ENLARGED MEIER REFERENCE A63
[SECTIONS A, B, C + D]



MEIER S1/A-63 REFERENCE FOR EXISTING HANDRAIL



MEIER E1/A-63 REFERENCE FOR EXISTING MATERIAL AT CONCRETE RAMP - SHORED + PROTECTED DURING CONSTRUCTION



MEIER D1/A-63 REFERENCE FOR RAMP

ARCHITECT:

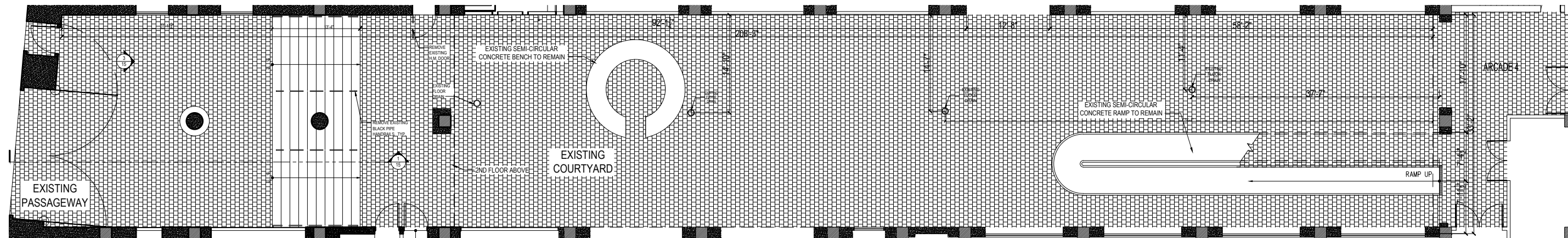
PEREZ ARCHITECTURE
 86 34TH STREET, SUITE D-601
 BROOKLYN, NY 11232

PRESERVATION CONSULTANT:

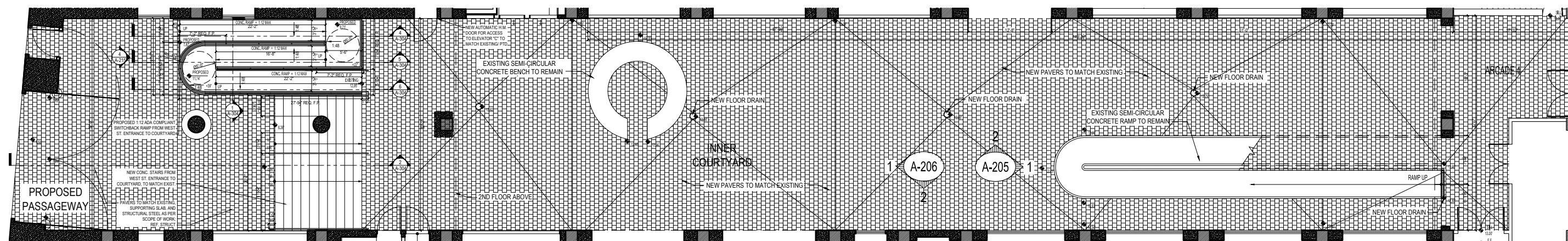
AYON STUDIO
 41 UNION SQUARE WEST
 SUITE 516
 NEW YORK, NY 10003

COURTYARD PLANS

SCOPE: PROVIDE ADA CONCRETE RAMP AT WEST STREET PASSAGEWAY ENTRANCE FROM BOTTOM OF CONCRETE STAIR UP TO EXISTING COURTYARD.



1 - EXISTING PLAN OF COURTYARD



2- PROPOSED PLAN OF COURTYARD

ARCHITECT:

PEREZ ARCHITECTURE
 86 34TH STREET, SUITE D-601
 BROOKLYN, NY 11232

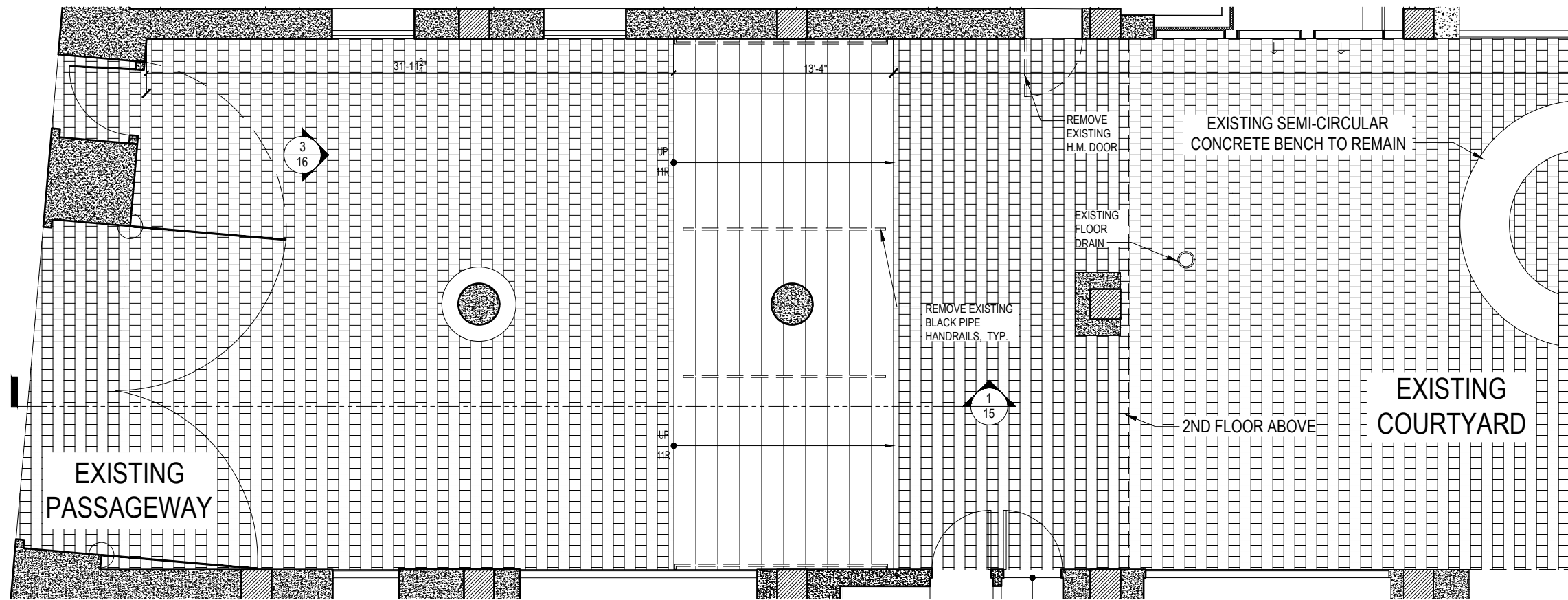
PRESERVATION CONSULTANT:

AYON STUDIO
 41 UNION SQUARE WEST
 SUITE 516
 NEW YORK, NY 10003

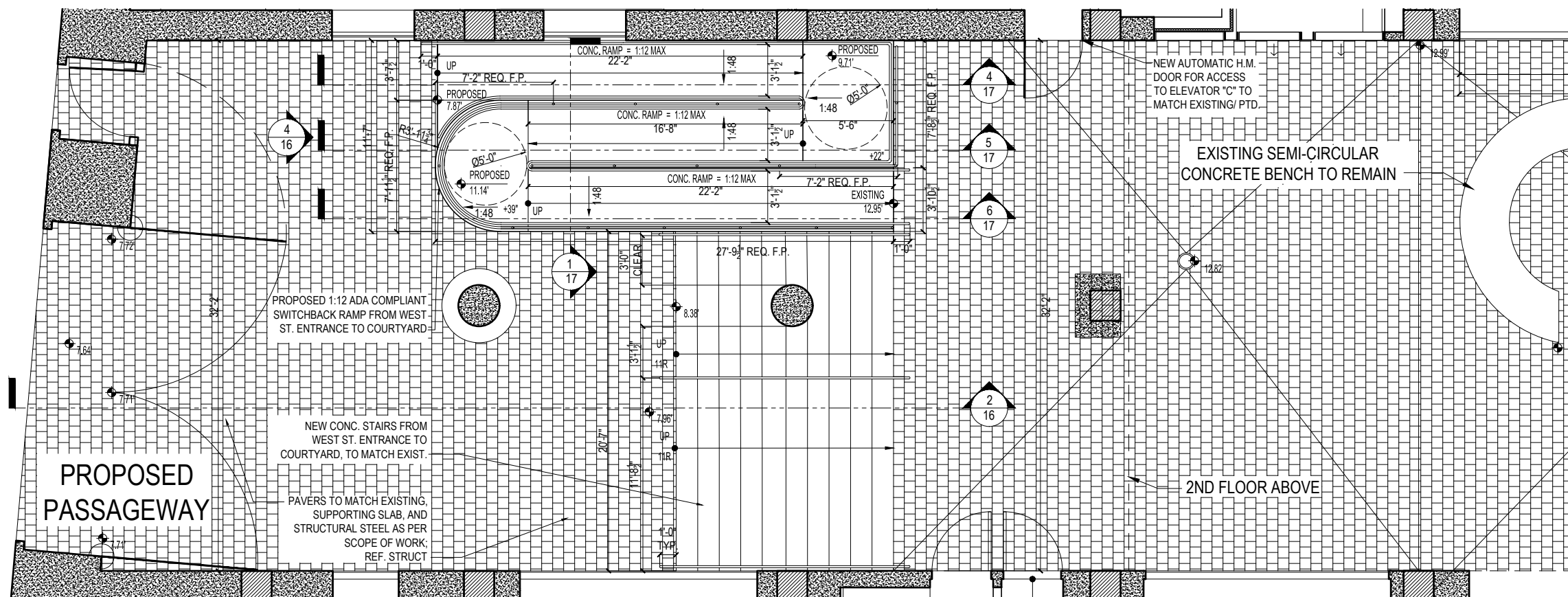
WESTBETH ARTISTS' HOUSING
 463 WEST STREET
 NEW YORK, NY. 10014

WEST STREET PASSAGEWAY PLANS

SCOPE: PROVIDE ADA COMPLIANT CONCRETE RAMP AT WEST STREET PASSAGEWAY ENTRANCE FROM BOTTOM OF CONCRETE STAIR UP TO EXISTING COURTYARD.



1 - EXISTING PLAN OF WEST STREET PASSAGEWAY



2 - PROPOSED PLAN OF WEST STREET PASSAGEWAY

ARCHITECT:

PEREZ ARCHITECTURE
 86 34TH STREET, SUITE D-601
 BROOKLYN, NY 11232

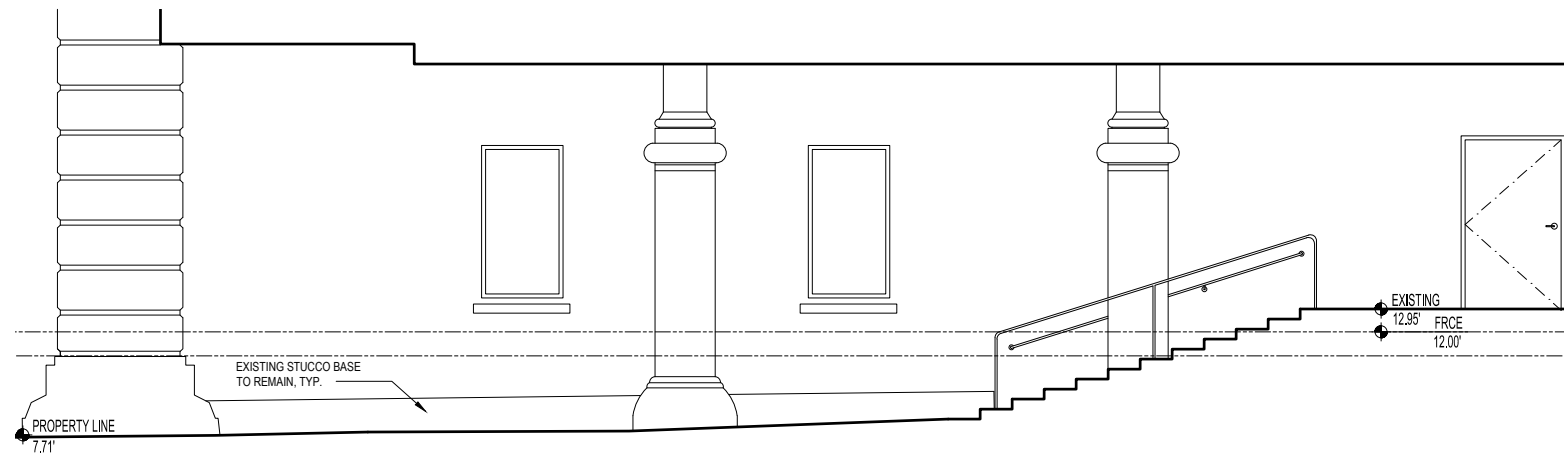
PRESERVATION CONSULTANT:

AYON STUDIO
 41 UNION SQUARE WEST
 SUITE 516
 NEW YORK, NY 10003

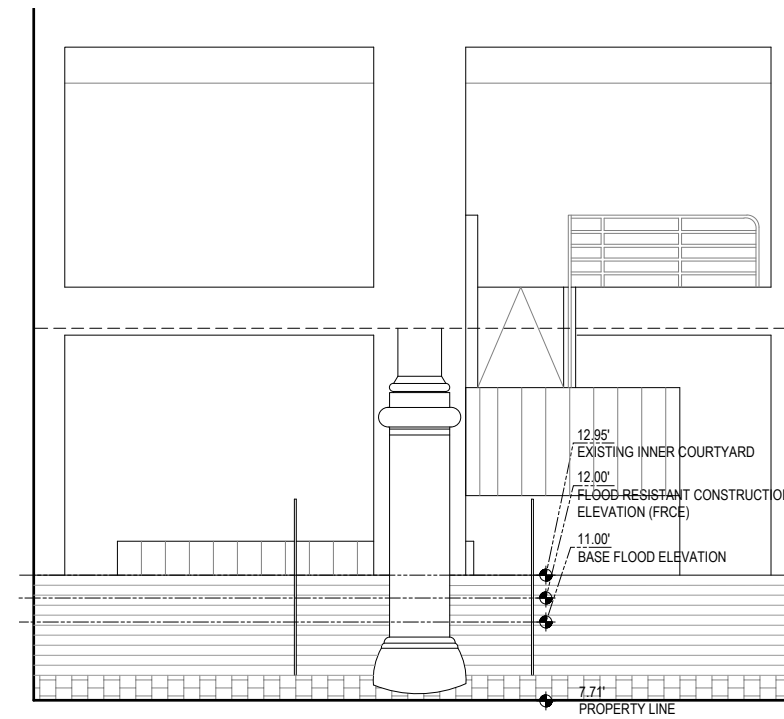
WESTBETH ARTISTS' HOUSING
 463 WEST STREET
 NEW YORK, NY. 10014

**WEST STREET PASSAGEWAY
 SECTIONS AND ELEVATIONS**

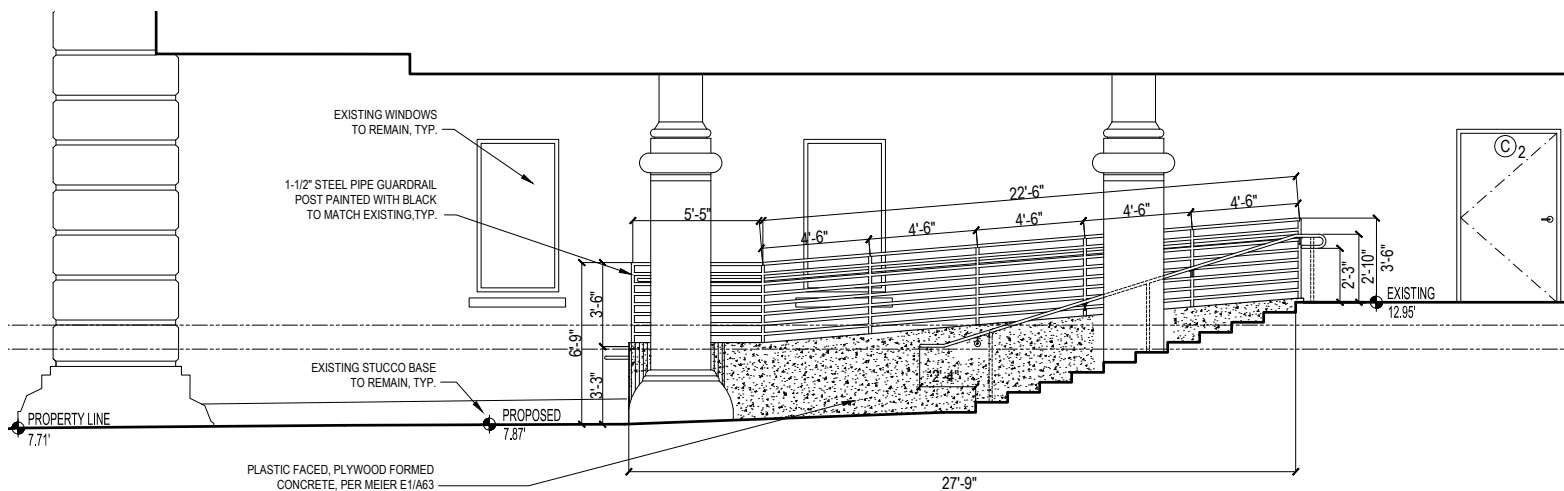
SCOPE: PROVIDE ADA CONCRETE RAMP
 AT WEST STREET PASSAGEWAY ENTRANCE
 FROM BOTTOM OF CONCRETE STAIR UP TO
 EXISTING COURTYARD.



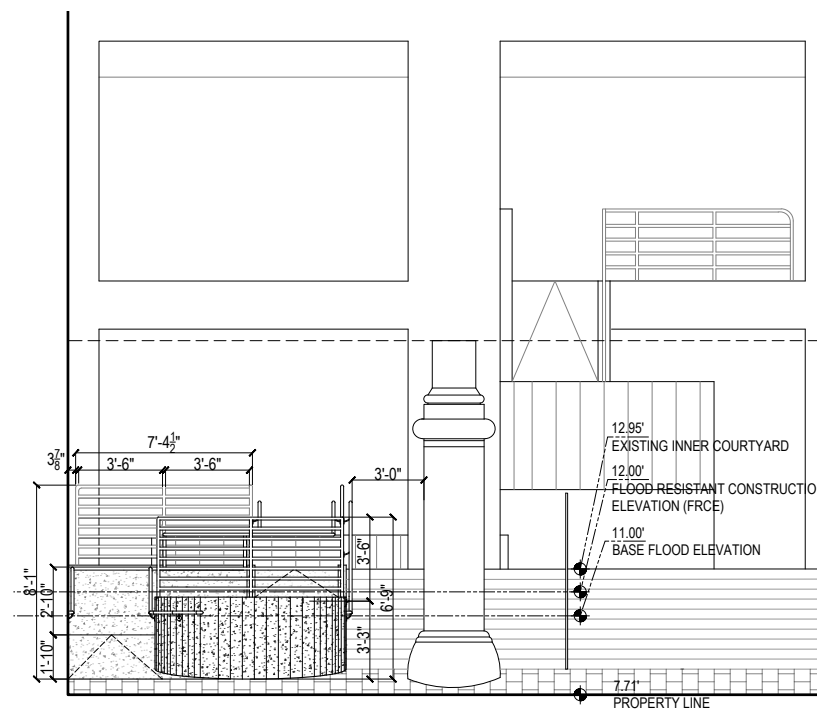
1 - EXISTING NORTH ELEVATION - WEST STREET COURTYARD ENTRY



3 - EXISTING EAST ELEVATION
 WEST STREET COURTYARD ENTRY



2 - PROPOSED NORTH ELEVATION - WEST STREET COURTYARD ENTRY - WITH ADA RAMP



4 - PROPOSED EAST ELEVATION
 WEST STREET COURTYARD ENTRY - WITH ADA RAMP

ARCHITECT:

PEREZ ARCHITECTURE
 86 34TH STREET, SUITE D-601
 BROOKLYN, NY 11232

PRESERVATION CONSULTANT:

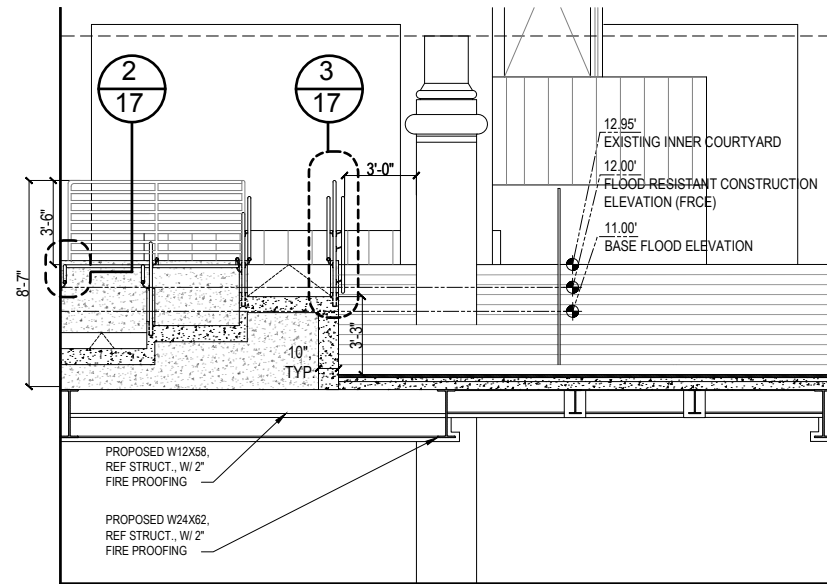
AYON STUDIO
 41 UNION SQUARE WEST
 SUITE 516
 NEW YORK, NY 10003

NOTE:
 WHILE THE PROPOSED RAMP REFERENCES
 DETAILS AND MATERIALS FROM MEIER, THE
 NEW RAMP WILL DIFFER IN BULK, SHAPE,
 AND OVERALL APPEARANCE

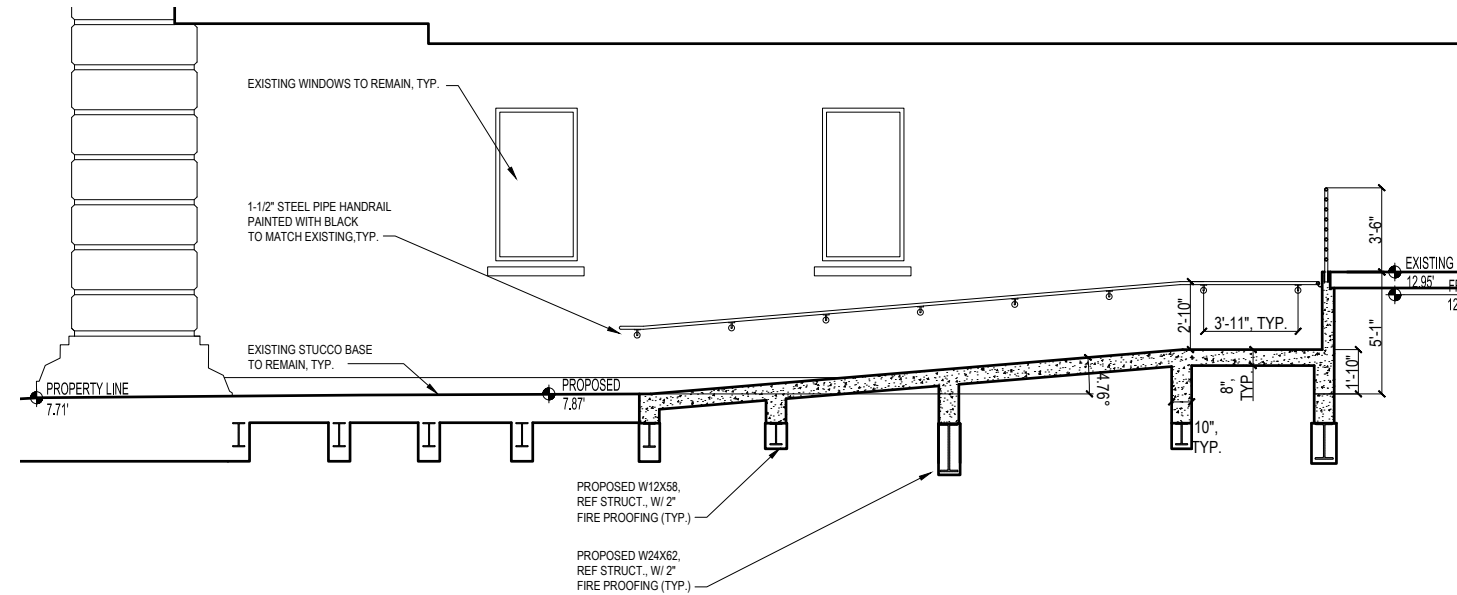
PROPOSED RAMP SECTIONS AND DETAIL

SCOPE: PROVIDE ADA CONCRETE RAMP AT WEST STREET PASSAGEWAY ENTRANCE FROM BOTTOM OF CONCRETE STAIR UP TO EXISTING COURTYARD.

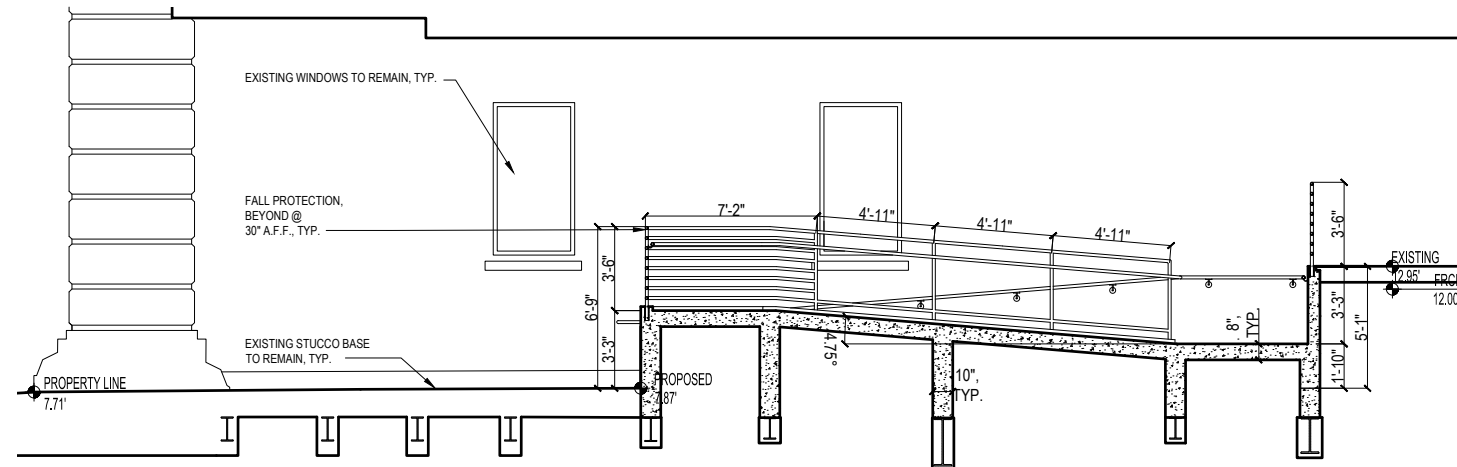
NEW REINFORCED CONCRETE RAMP MATERIAL TO MATCH EXISTING CONCRETE STAIRS. PROVIDE SECTION 504 UNITED FEDERAL ACCESSIBILITY STANDARDS COMPLIANT HANDRAILS AND FALL PROTECTION.



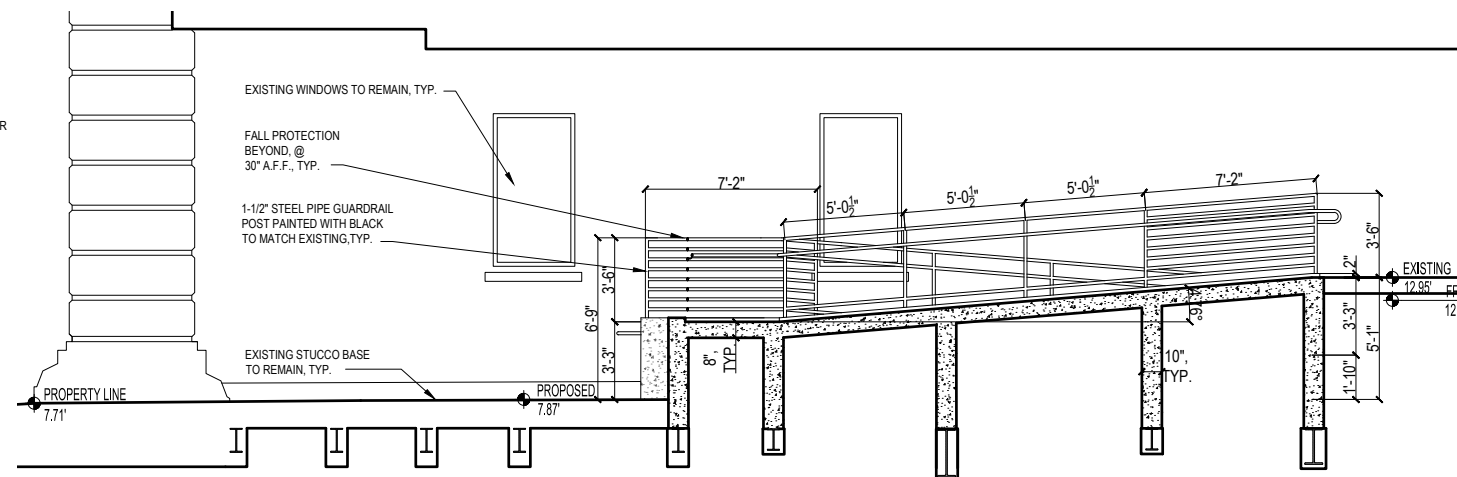
1 - TRANSVERSE SECTION



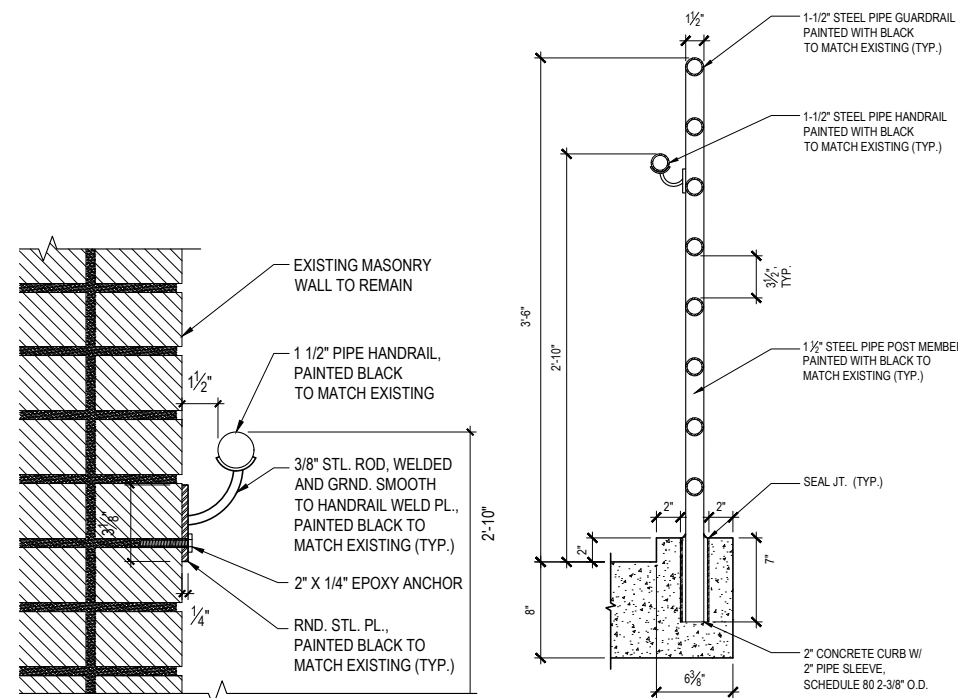
4 - LONGITUDINAL SECTION DETAIL 1:12 RAMP



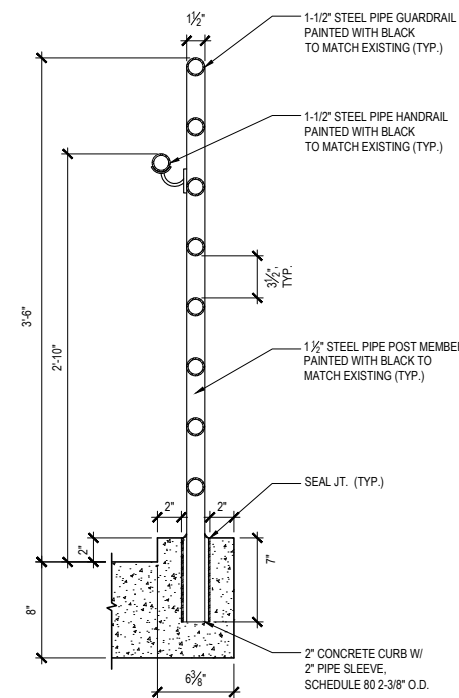
5 - LONGITUDINAL SECTION DETAIL 1:12 RAMP



6 - LONGITUDINAL SECTION DETAIL 1:12 RAMP



2 - DETAIL - HANDRAIL



3 - DETAIL - FALL PROTECTION AND HANDRAIL

ARCHITECT:

PEREZ ARCHITECTURE
 86 34TH STREET, SUITE D-601
 BROOKLYN, NY 11232

PRESERVATION CONSULTANT:

AYON STUDIO
 41 UNION SQUARE WEST
 SUITE 516
 NEW YORK, NY 10003