

LINCOLN SQUARE SAFETY IMPROVEMENT STUDY

Presentation to Community Board 7

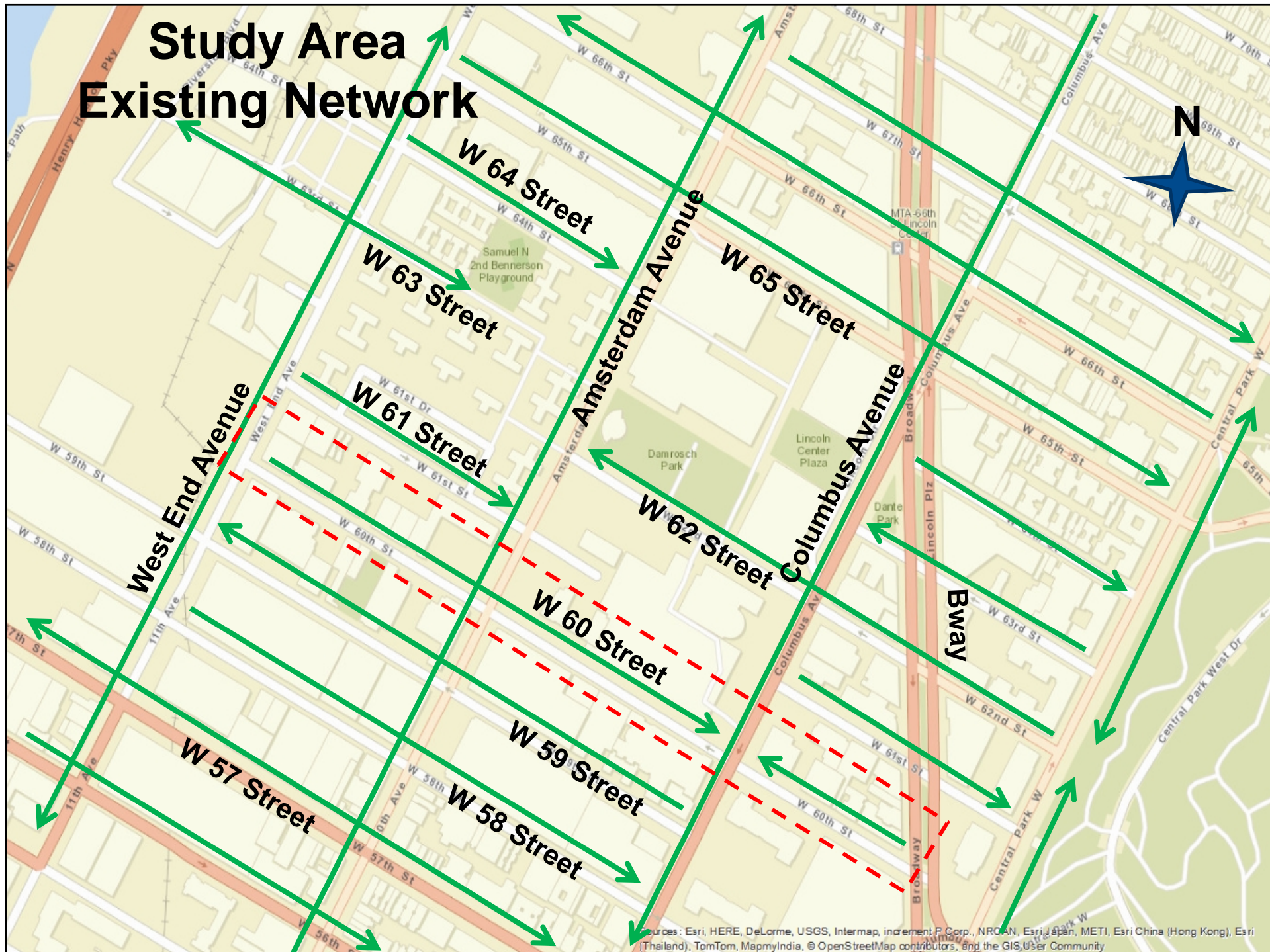
Tuesday, June 14, 2016



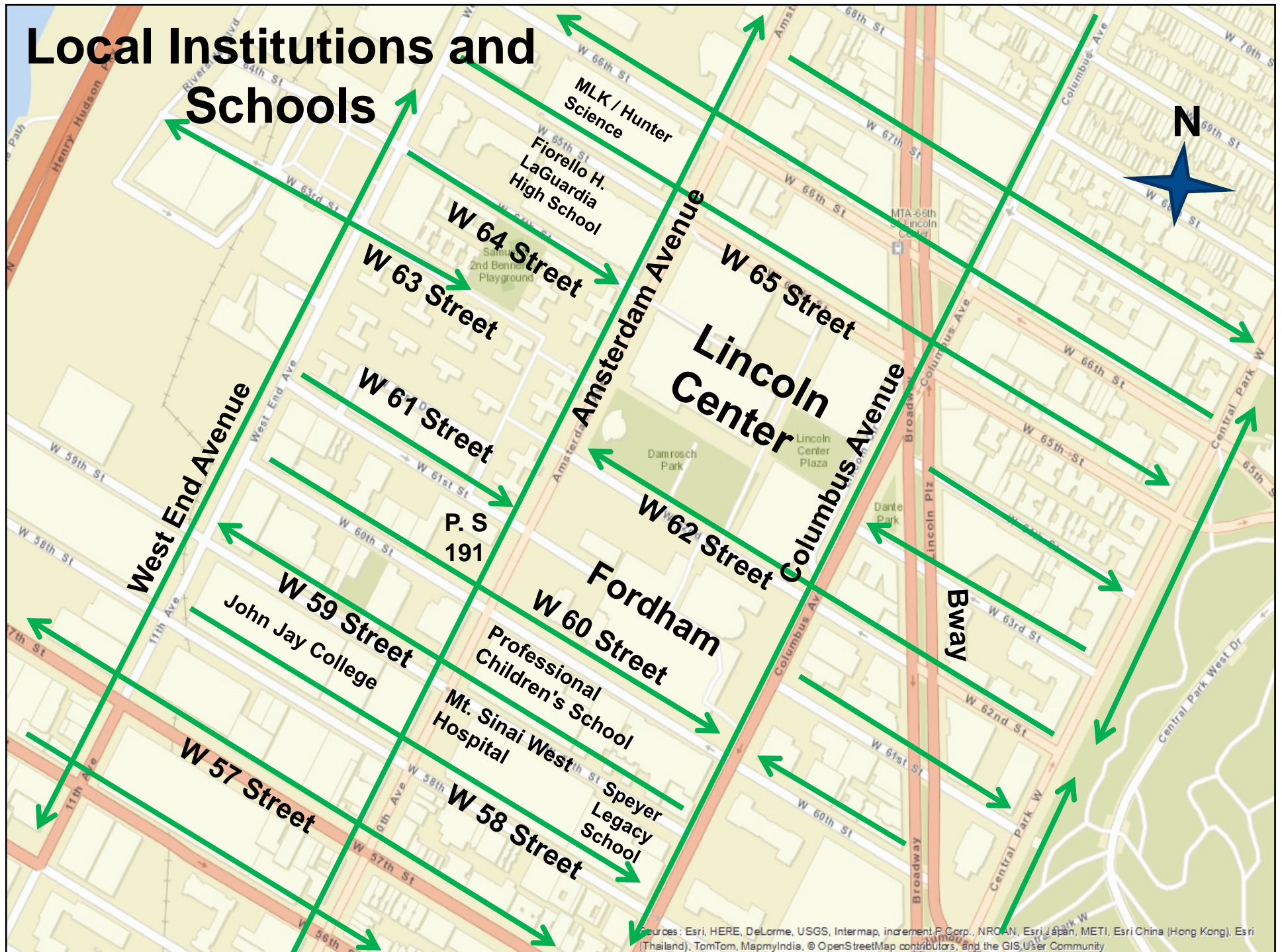
BACKGROUND

- Community Board 7 asked DOT to study the street network in the Lincoln Square area.
- A key concern is the existing head-on condition and heavy pedestrian volumes at Columbus Avenue and West 60th Street
 - West 60th Street intersects with a Vision Zero priority area
- The area is home to many institutions and schools
 - Lincoln Center, Fordham University, Mount Sinai West Hospital, the Professional Children's School, P.S. 191, and Fiorello H. Laguardia High School, among others

Study Area Existing Network

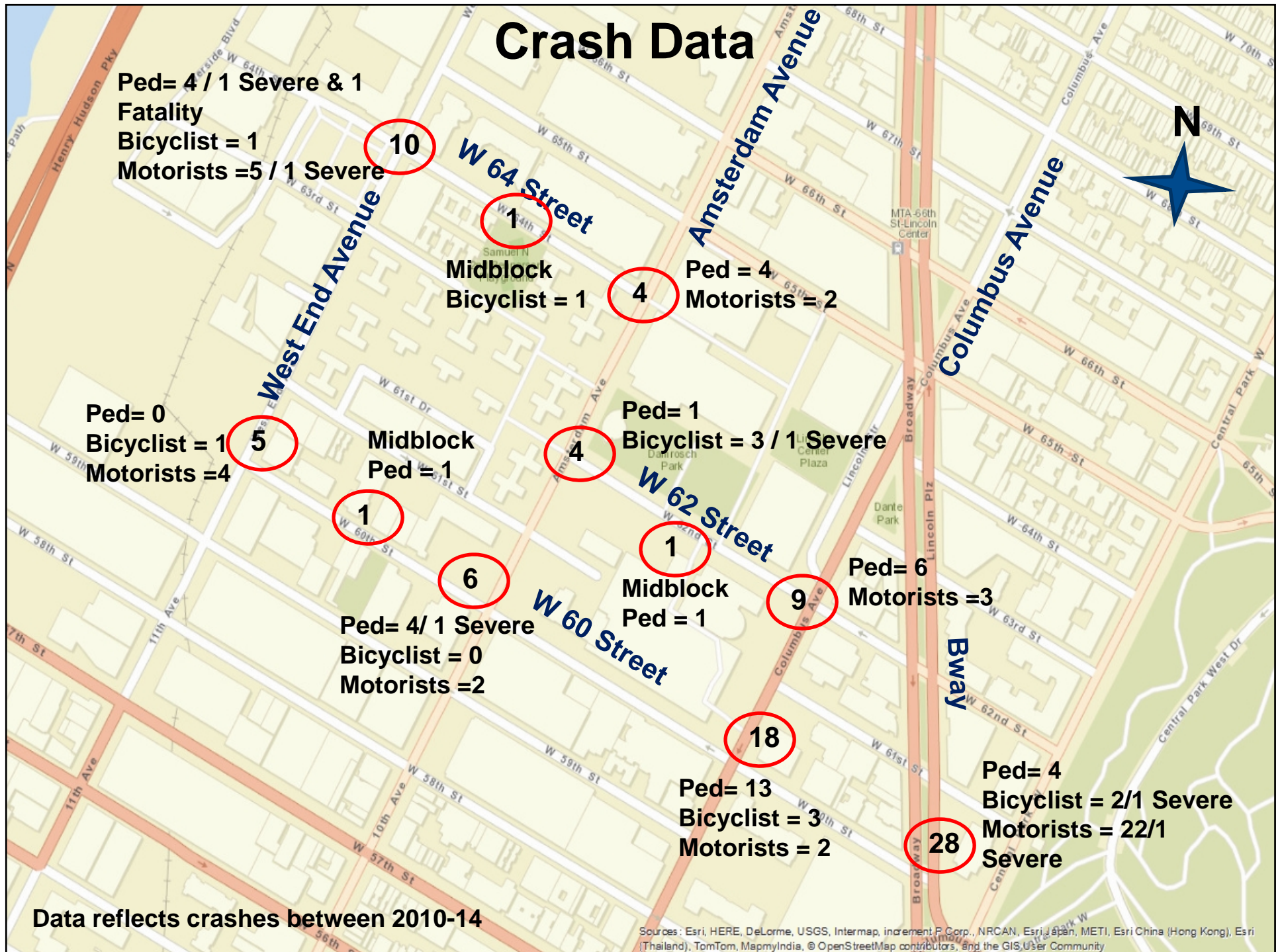


Local Institutions and Schools



Sources: Esri, HERE, DeLorme, USGS, Intermap, increment P Corp., NRCAN, Esri Japan, METI, Esri China (Hong Kong), Esri (Thailand), TomTom, MapmyIndia, © OpenStreetMap contributors, and the GIS User Community

Crash Data



West 60th Street at Columbus Avenue



- Pedestrian and turning vehicle conflicts
- High pedestrian volumes
- Head-on condition due to conflicting street direction

West 60th Street between Amsterdam and Columbus Avenues



- 50 – 52 Feet Wide
- No lane designation
- Speeding due to excessive street width
- Mixed use (commercial, institutional, and residential)

West 62nd Street between Columbus and Amsterdam Avenues



- 50 – 52 Feet Wide
- No lane designation
- Low volumes
- Street was two-way prior to construction
- Curb side parking used primarily by vehicles accessing Lincoln Center

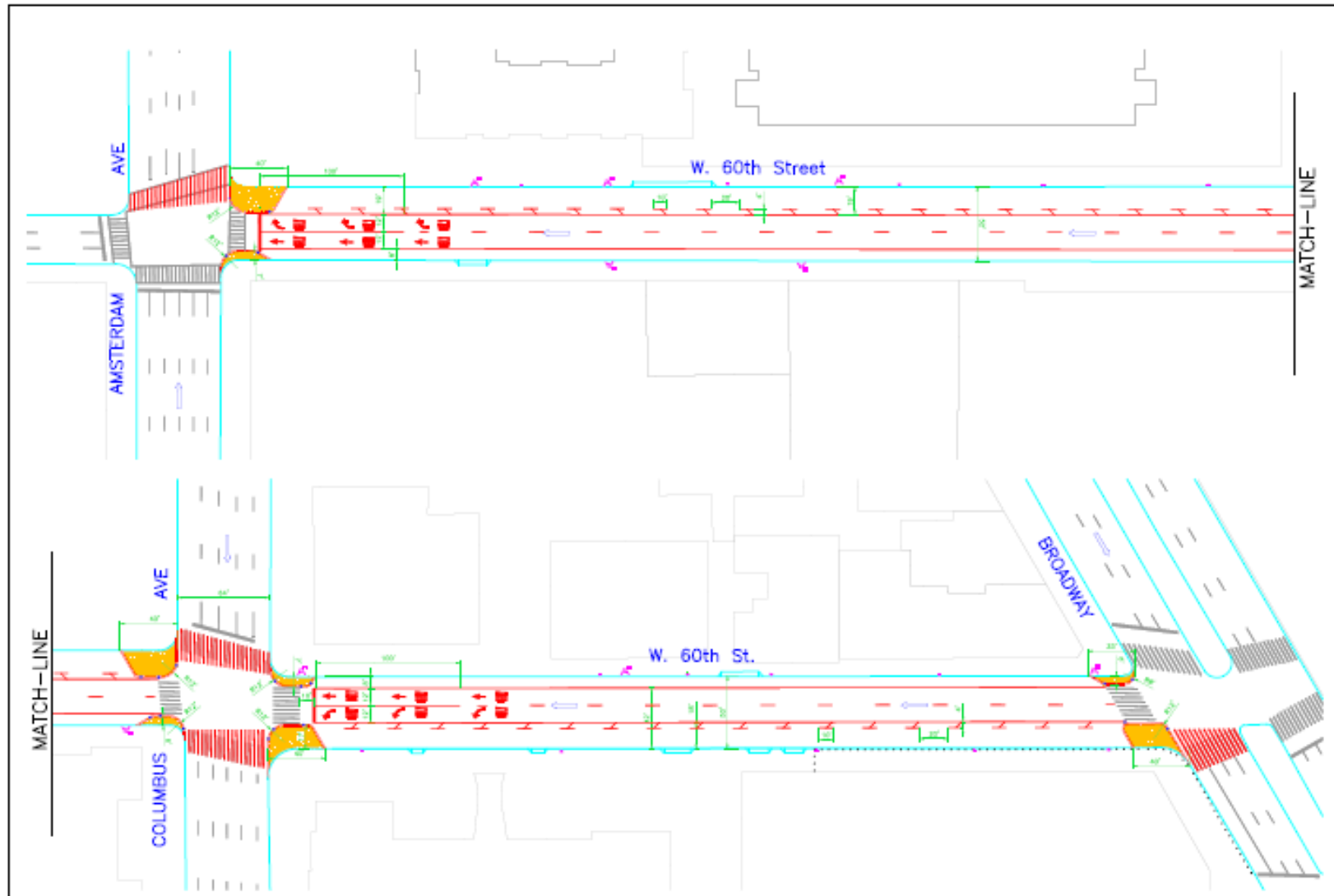
Proposed Street Direction Changes

- = Existing direction
- = Proposed direction



Sources: Esri, HERE, DeLorme, USGS, Intermap, increment P Corp., NRCAN, Esri Japan, METI, Esri China (Hong Kong), Esri (Thailand), TomTom, MapmyIndia, © OpenStreetMap contributors, and the GIS User Community

Proposed Changes to West 60th Street between Broadway and Amsterdam Avenue



SUMMARY OF PROPOSALS AND BENEFITS

- Reverse W 60th Street from Columbus to West End Avenues
 - Eliminates head-on condition at Columbus Avenue, improving pedestrian safety.
- Install painted curb extensions on W 60th Street at Broadway, Columbus and Amsterdam Avenues
 - Reduces pedestrian crossing distances
- Install stripped parking lane and lane designation on W 60th Street from Broadway to Amsterdam Avenue
 - Reduces roadway width and simplifies traffic flow
- Reverse W 64th Street from between Amsterdam and West End Avenues
 - Improves traffic circulation
- Restore W 62nd Street to two-way flow between Columbus and Amsterdam Avenues
 - Reduces roadway width

THANK YOU!

Questions?



NYC DOT



NYC DOT



nyc_dot



NYC DOT