

Queens CB 2 Bike Forum - II



Commissioner Janette Sadik-Khan
Presented July 17, 2012 to Community Board 2

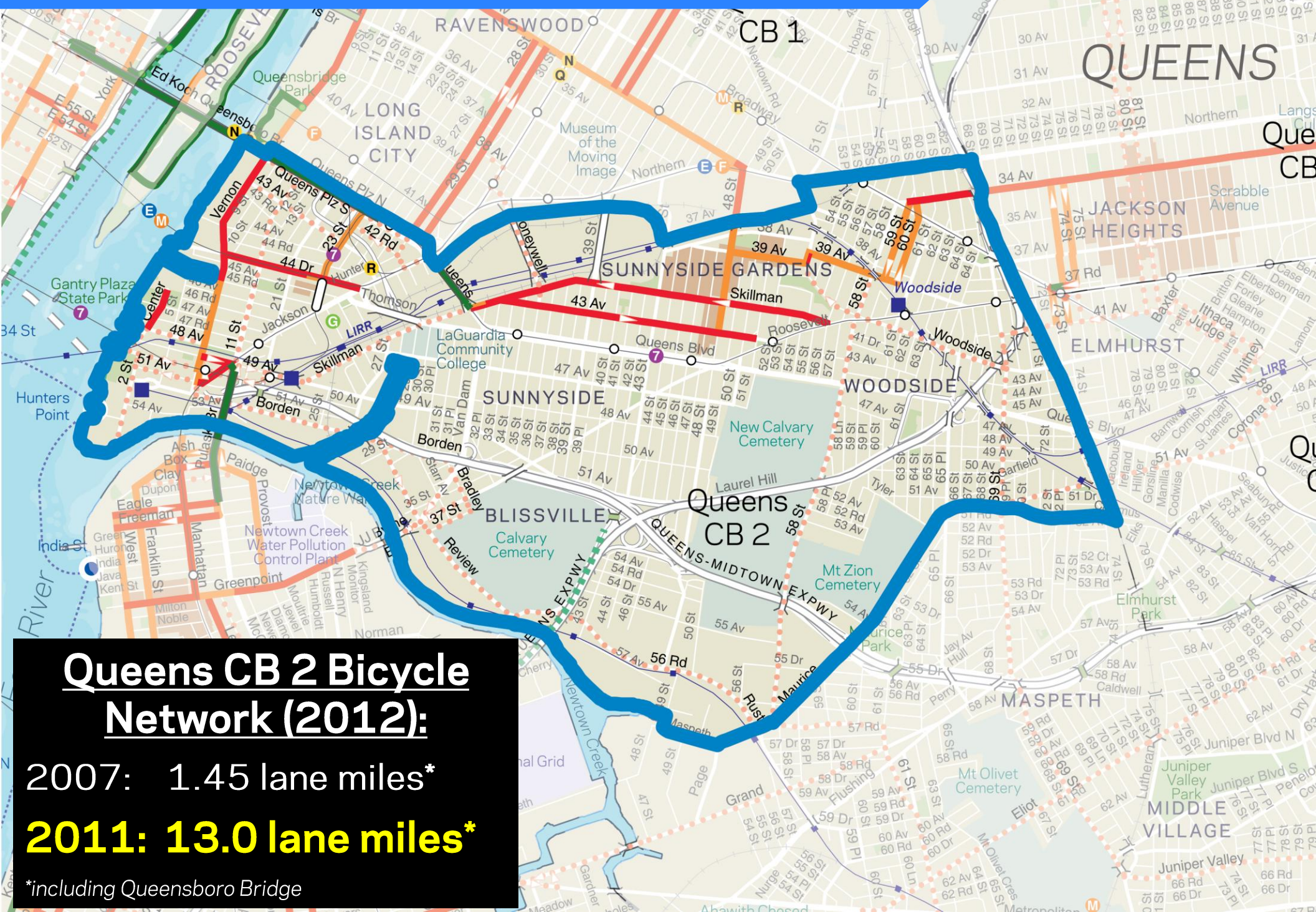
New York City Department of Transportation



Agenda

- March Bike Forum Recap
- Existing Conditions
- Proposed Phasing
- Next Steps

Existing CB 2 Facilities



Queens CB 2 Bicycle Network (2012):

2007: 1.45 lane miles*

2011: 13.0 lane miles*

*including Queensboro Bridge

Community Planning Process

**Community Route
Identification**

Evaluation of Routes

**Development of Project
Priorities and Phasing**

Community Board Input

Implementation



CB 2 Bike Forum – March 2012

Approximately 40 attendees
Bicycle Facility Presentation
Community Route Identification



Evaluation of Community-Proposed Routes

Top Destinations:

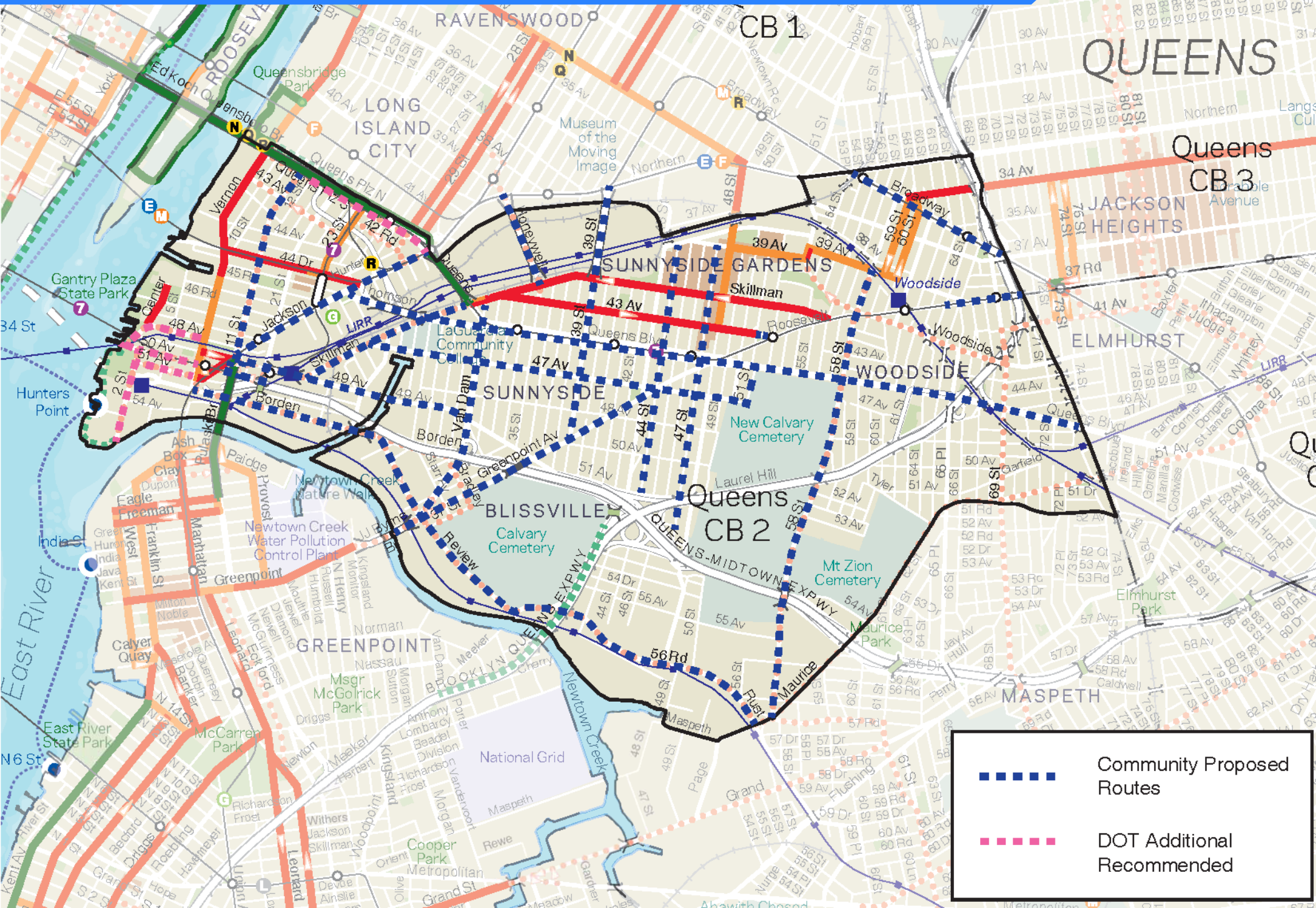
- Bridges
- Eastern Queens
- Gantry Plaza State Park
- Commercial Districts
- La Guardia Community College

Top Routes Discussed:

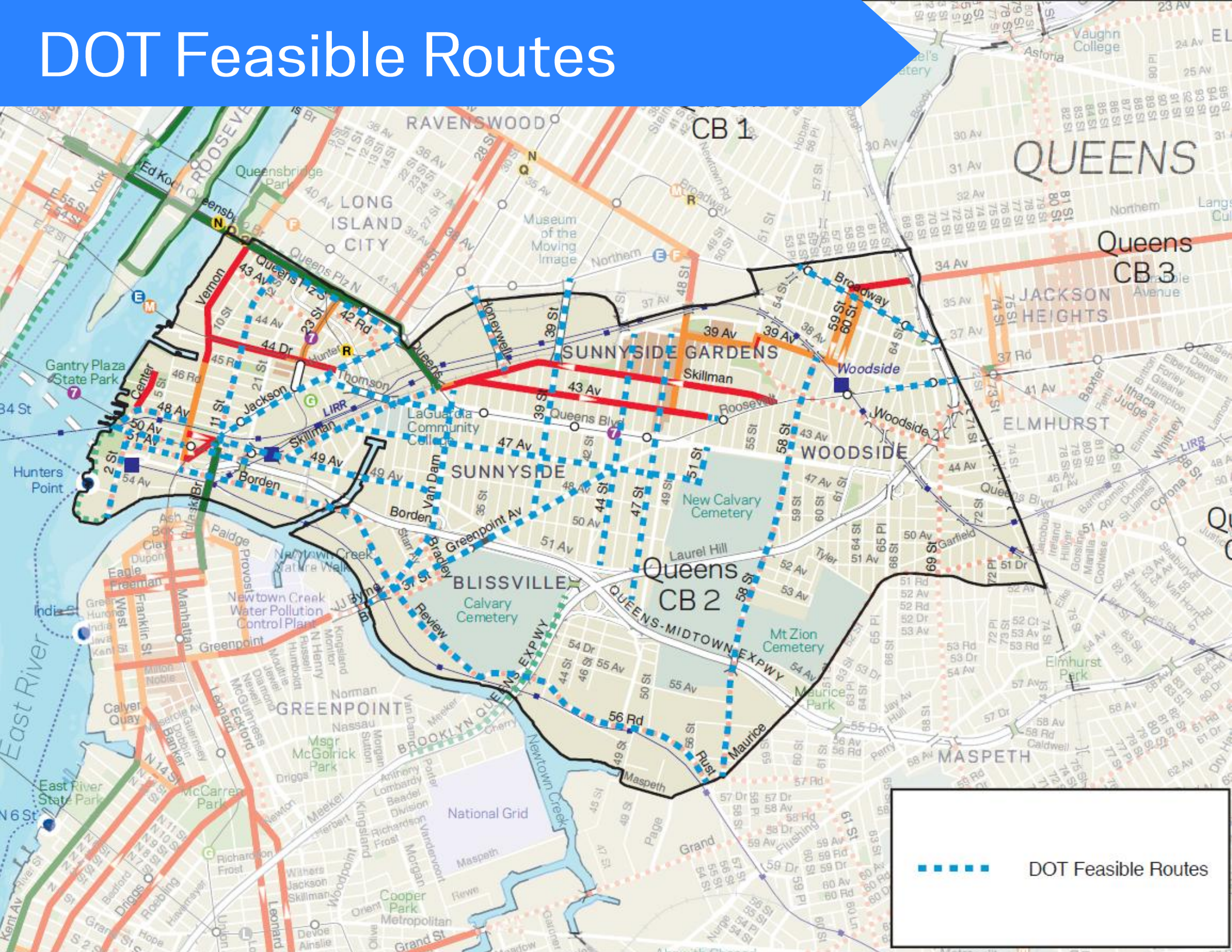
- 11th St
- 56th Rd / Rust St
- Borden Ave / Review Ave
- 58th St
- Honeywell St Bridge
- 39th St Bridge
- Greenpoint Ave & Bridge
- Skillman Ave / 43rd Ave Extensions



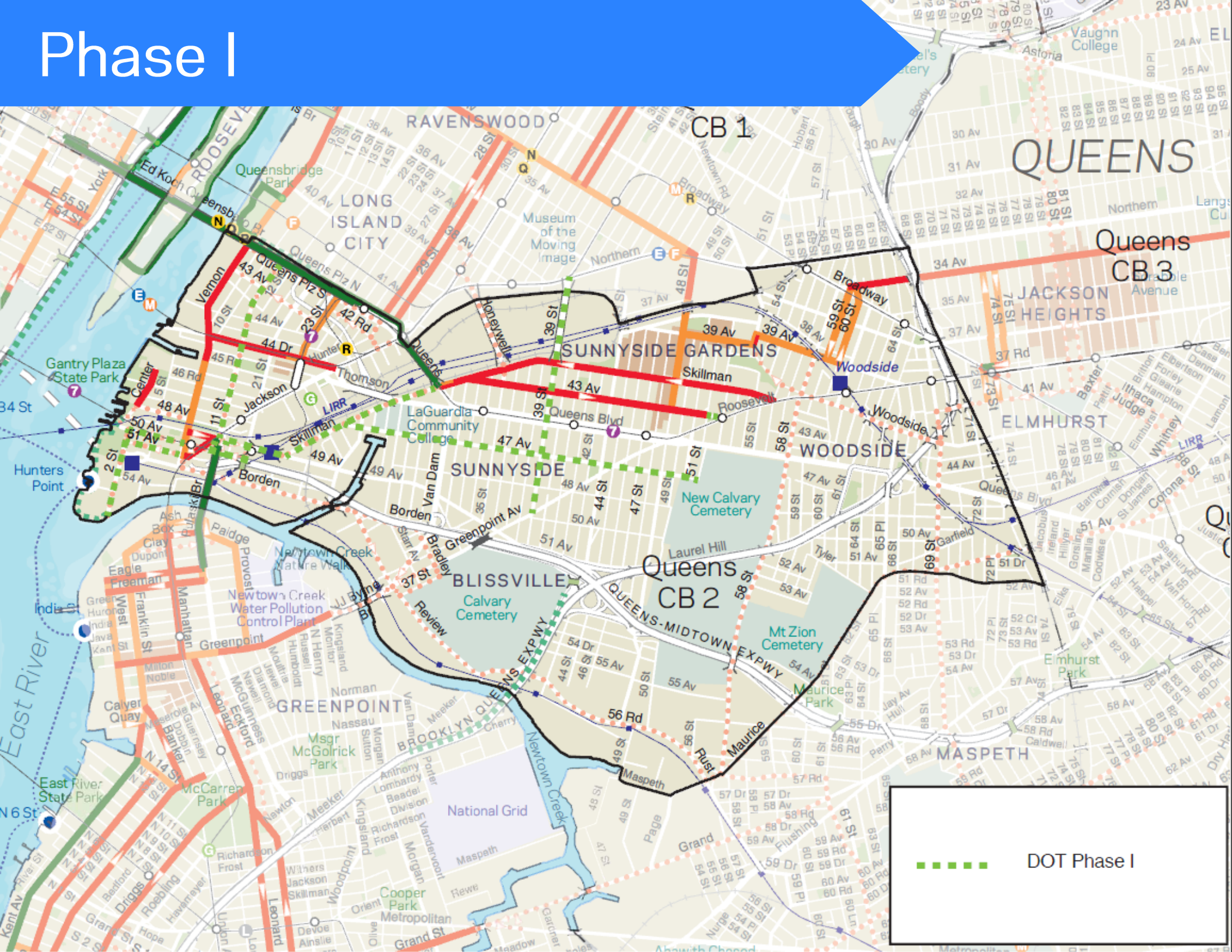
Top Community Proposed Routes



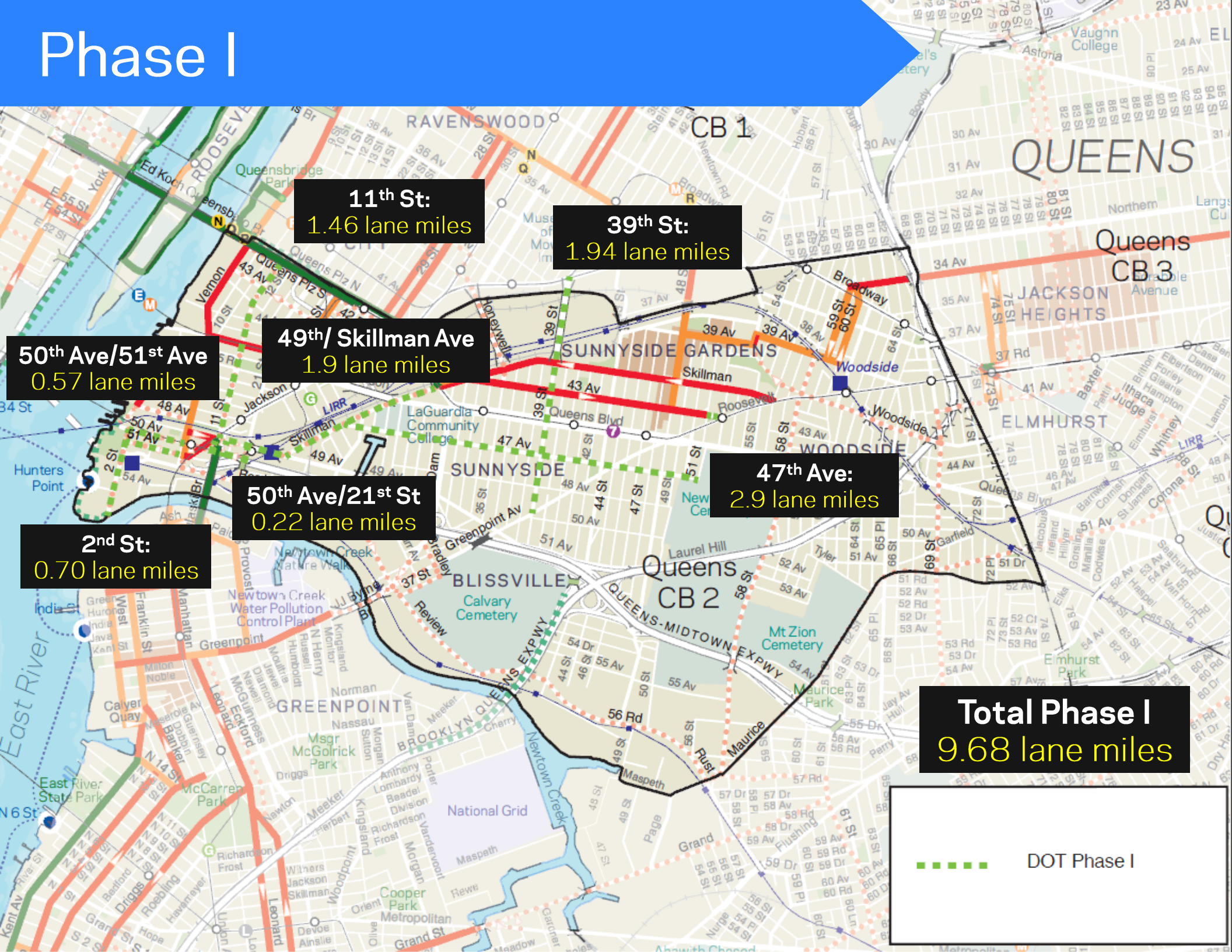
DOT Feasible Routes



Phase I



Phase I



11th St:
1.46 lane miles

39th St:
1.94 lane miles

49th/Skillman Ave
1.9 lane miles


50th Ave/51st Ave
0.57 lane miles

50th Ave/21st St
0.22 lane miles

2nd St:
0.70 lane miles

47th Ave:
2.9 lane miles

Total Phase I
9.68 lane miles

Legend:  DOT Phase I

Existing Conditions - Proposed Routes

- 11th St

- Width ranges between 40 to 60 feet
- Connects existing Pulaski Bridge facility to lanes on 44th Dr and Queens Plaza



Existing Conditions - Proposed Routes

- 39th St Bridge

- Width of approximately 47 feet
- Connects bike lanes on Skillman and 43rd Aves to 34th Ave bike facilities
- Feeds to bike lanes on 35th and 36th Sts in Astoria

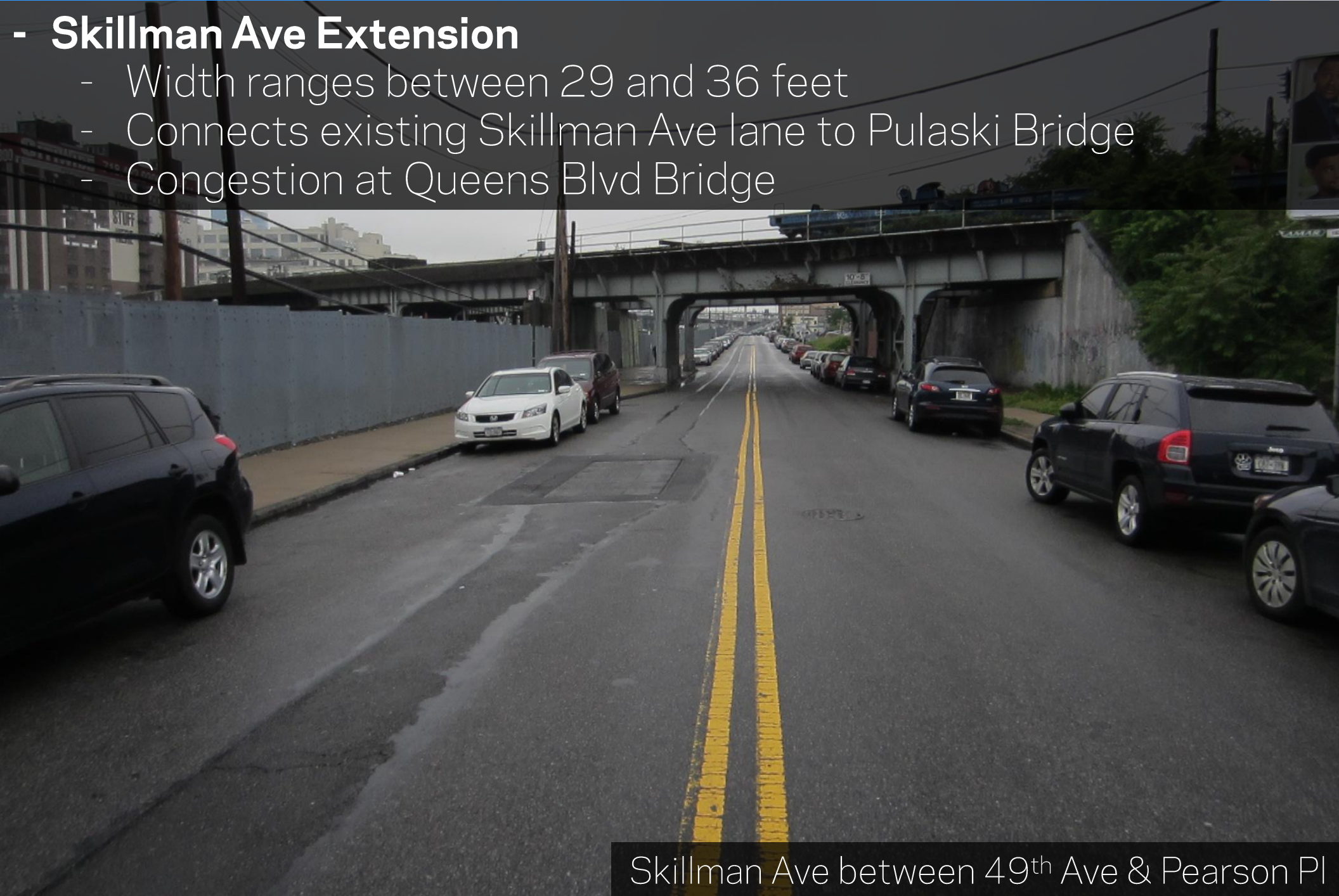


39th St between Skillman Ave & Northern Blvd

Existing Conditions - Proposed Routes

- Skillman Ave Extension

- Width ranges between 29 and 36 feet
- Connects existing Skillman Ave lane to Pulaski Bridge
- Congestion at Queens Blvd Bridge



Skillman Ave between 49th Ave & Pearson Pl

Existing Conditions - Proposed Routes

- 47th Ave

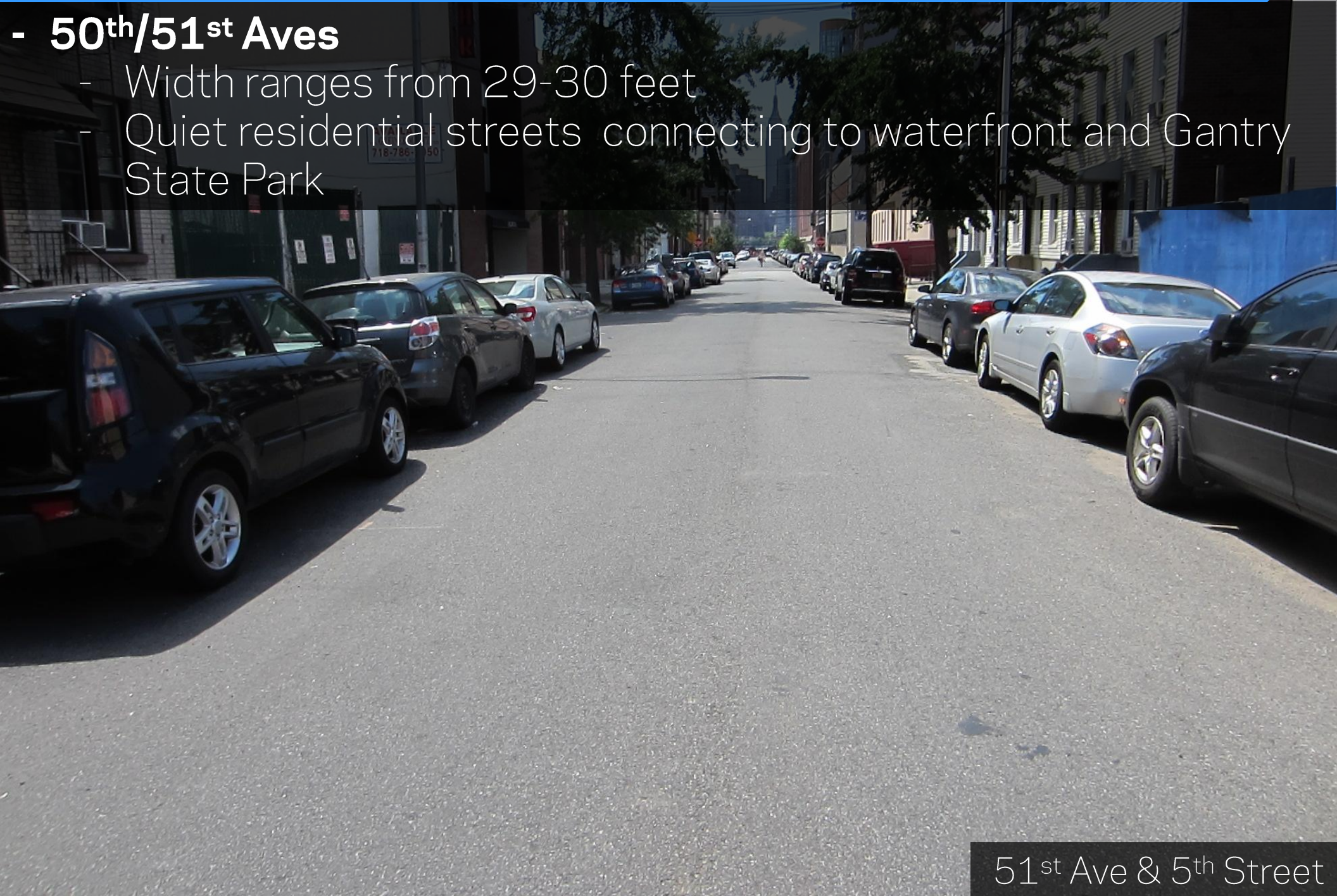
- Width ranges from 43 - 45 feet
- East-West bicycle facility South of Queens Blvd



Existing Conditions - Proposed Routes

- 50th/51st Aves

- Width ranges from 29-30 feet
- Quiet residential streets connecting to waterfront and Gantry State Park

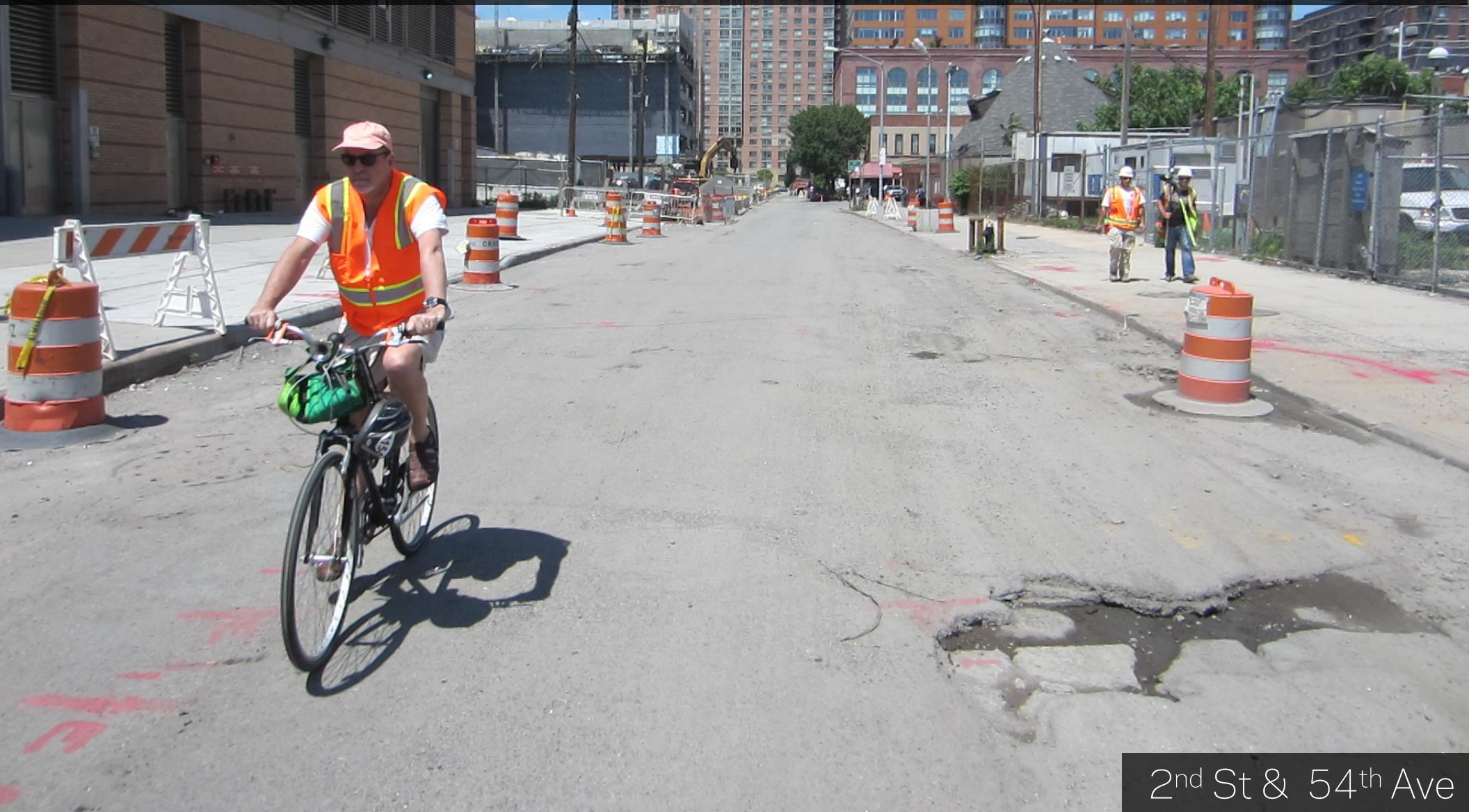


51st Ave & 5th Street

Existing Conditions - Proposed Routes

- 2nd Street

- Width ranges from 29 - 34 feet
- Connects Long Island City to East River Ferry



Bicycle Parking

Community- Recommended Locations in Queens CB 2:

- PS 1
- Skillman Ave near Met grocery
- Skillman Ave/46th St
- Vernon Ave/46th Rd
- 39th Ave/64th St
- Queens Blvd/40th St
- Queens Blvd/46th St
- Gantry Plaza-5th St
- Corner outside Queens library at 41st St/Broadway

Yellow locations have had bike racks installed since request



StreetRacks



Meter Rack



Hoop Rack

Contact Us

- Fill out an online form at: www.nyc.gov/dot
- **Mail your comments to:**

**Office of the Queens Borough Commissioner
NYC Department of Transportation
120-55 Queens Boulevard, Room 285
Kew Gardens, NY 11424-1015**

Agenda

- Small Group Discussion (45 Minutes)
 - Prioritize Routes
 - Bike Racks
 - Discussion
- Recap (5 Minutes)

Questions?

**Thank
You**