

233rd Street: Laconia Ave to Provost Ave

High Crash Corridor

2012

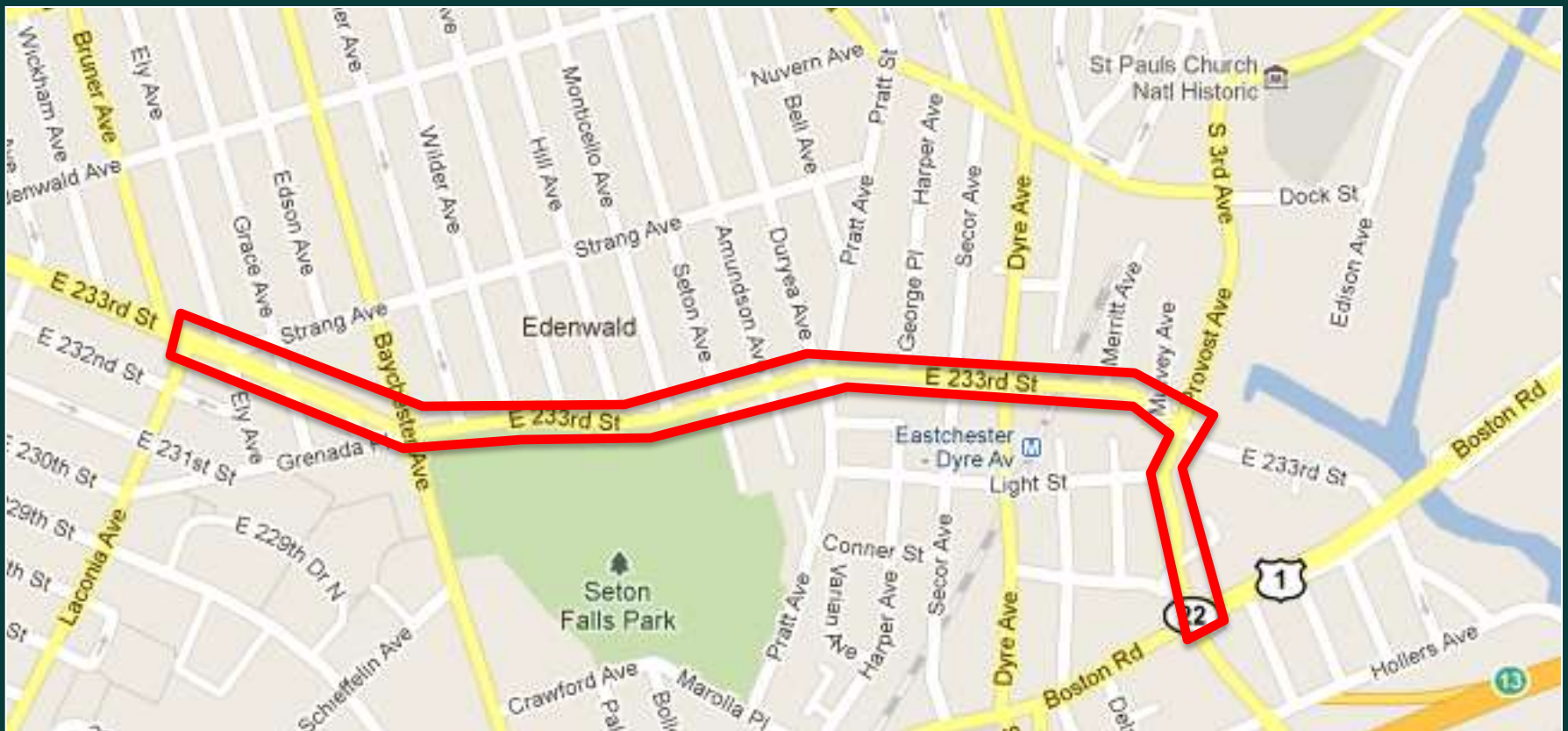
Community Board 12 – May 16, 2012



Project Background

- High Crash Corridor
- Two moving lanes in each directions plus curb-side parking

Project Limits: Laconia Ave to Provost Ave



Existing Conditions

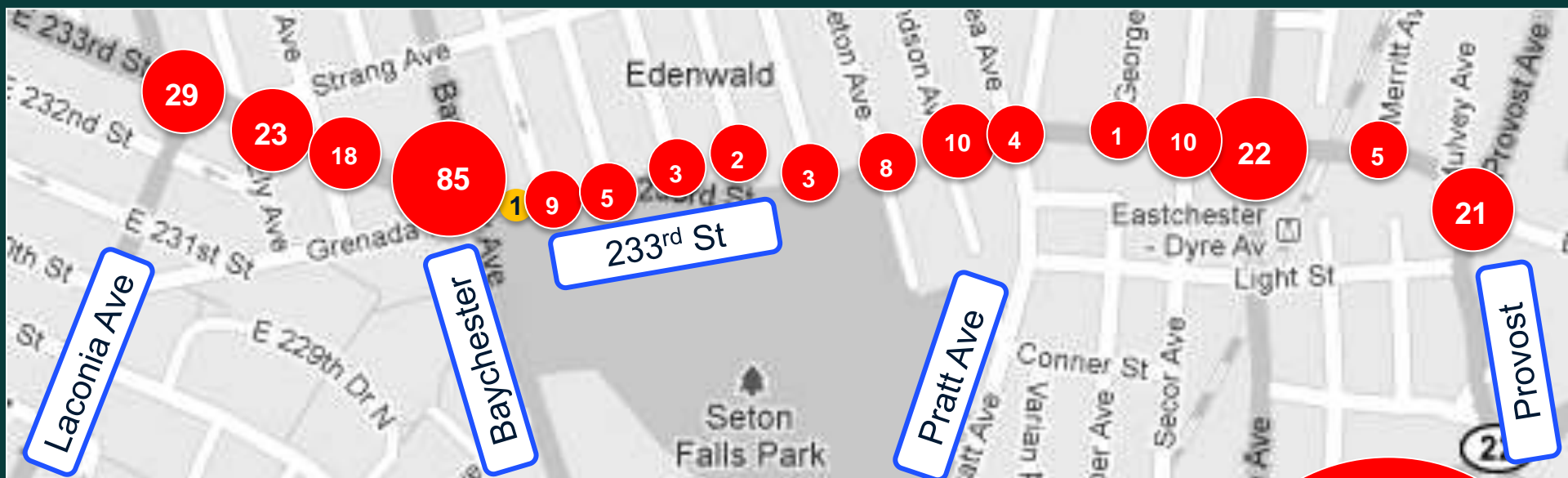
Institute for
the blind →

- Seton Falls Park access
- Truck routes on 233rd St, Baychester Ave, Provost Ave
- Primarily residential with some commercial and industrial land uses



Existing Conditions at Seton Falls Park

Safety Data



233rd St - Laconia Ave to Provost Ave, BX

Injury Summary, 2006-2010

	Total Injuries	Avg Inj/Yr	Avg Inj/Mile/Yr	Severity Percentile of Boro Corridors
Pedestrian	36	7.2	7.4	80%
Bicyclist	2	0.4	0.4	N/A
Motor Vehicle Occupant	220	44	45.4	91%
Total	258	51.6	53.2	87%

Fatalities, 01/01/2006-1/9/2012 : 1

Source: Injuries: NYS Dept. of Transportation
Fatalities: NYC Dept. of Transportation

Pedestrian:	0
Bicyclist:	0
Motor Vehicle Occupant:	1

**Total Fatalities
2006-
2012**

Total Injuries
(Motor vehicle
occupant, bicycle
and pedestrian)
2006-2010

**Ranks in 87th percentile for total
crashes in the Bronx**

1 fatality

Need: Why 233rd Street?

Long crossing distances



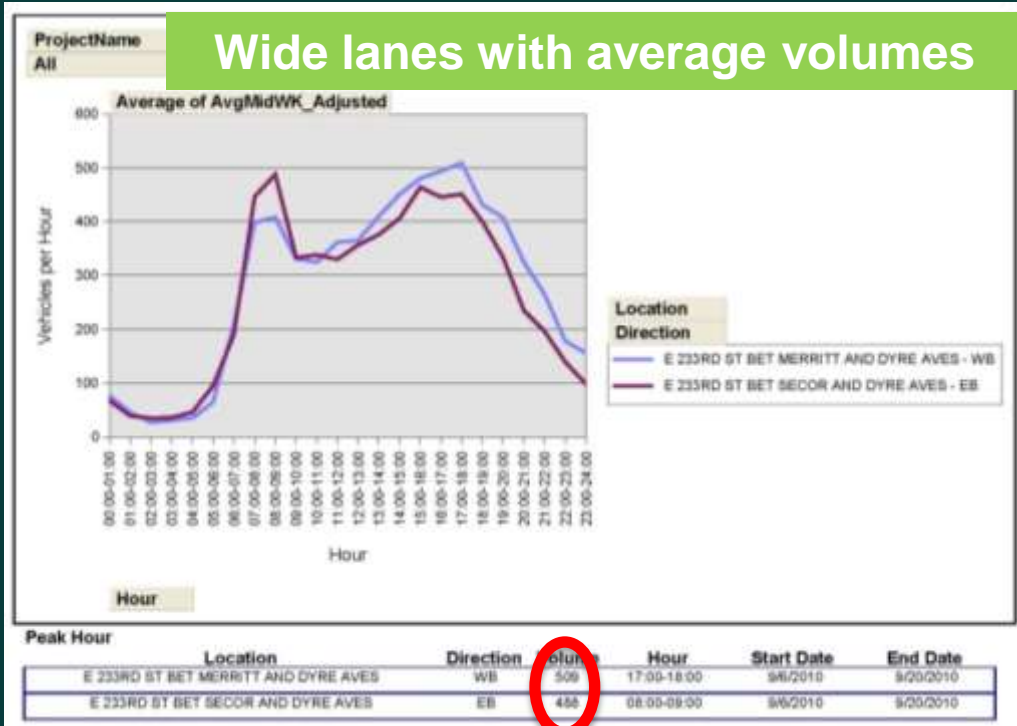
75 % of vehicles traveling over speed limit



Faded markings

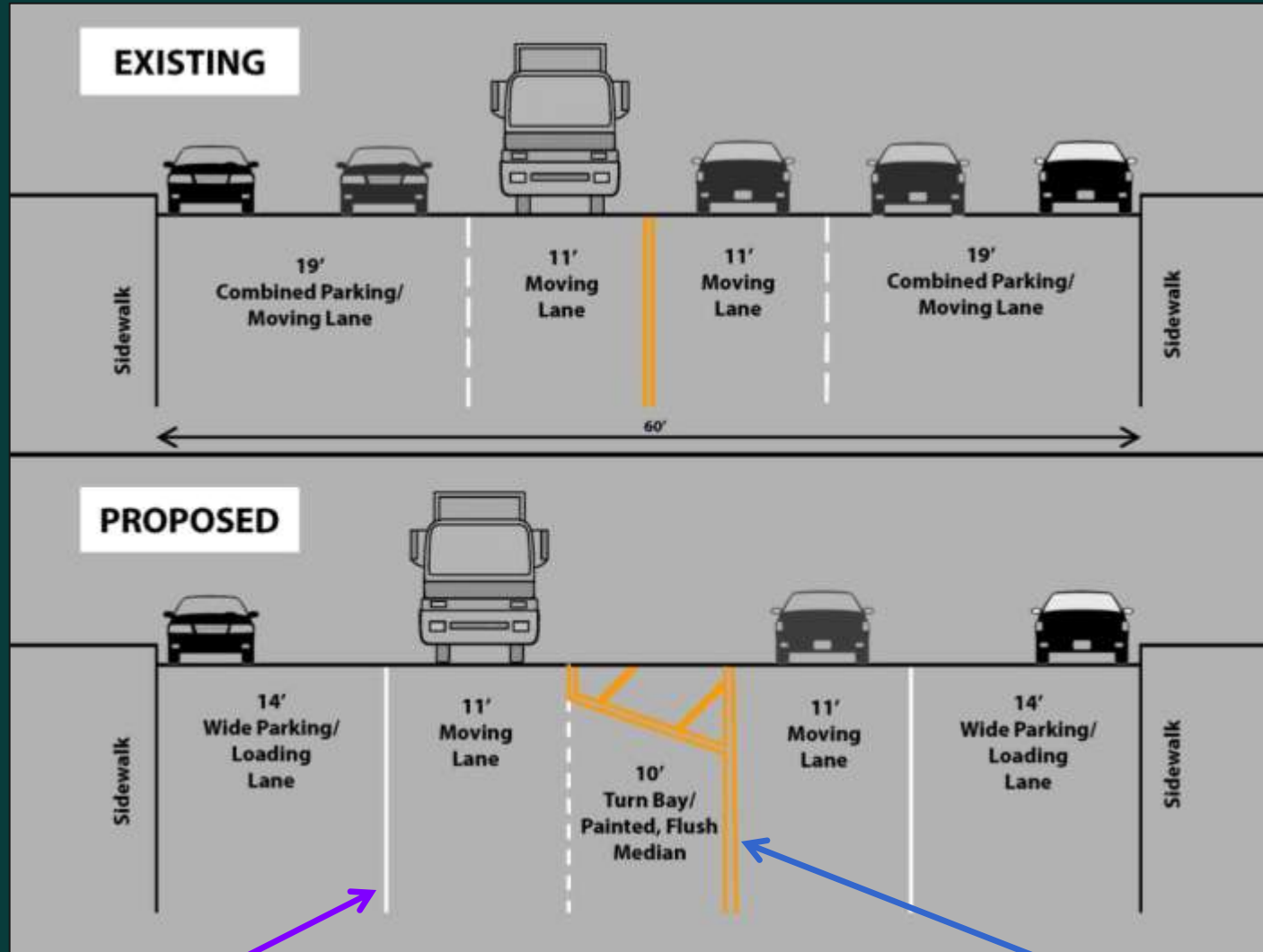


Wide lanes with average volumes



Volumes for 233rd Street between Merritt and Dyre Aves, peak at 500

Corridor Proposal Details



Install a wide parking lane stripe

Install painted center median with left turn bays

Proposal Details: 233rd St and Hill Ave

Install left turn bays to better organize traffic

Install a painted center median and a parking stripe



Proposal Details: 233rd St & Baychester

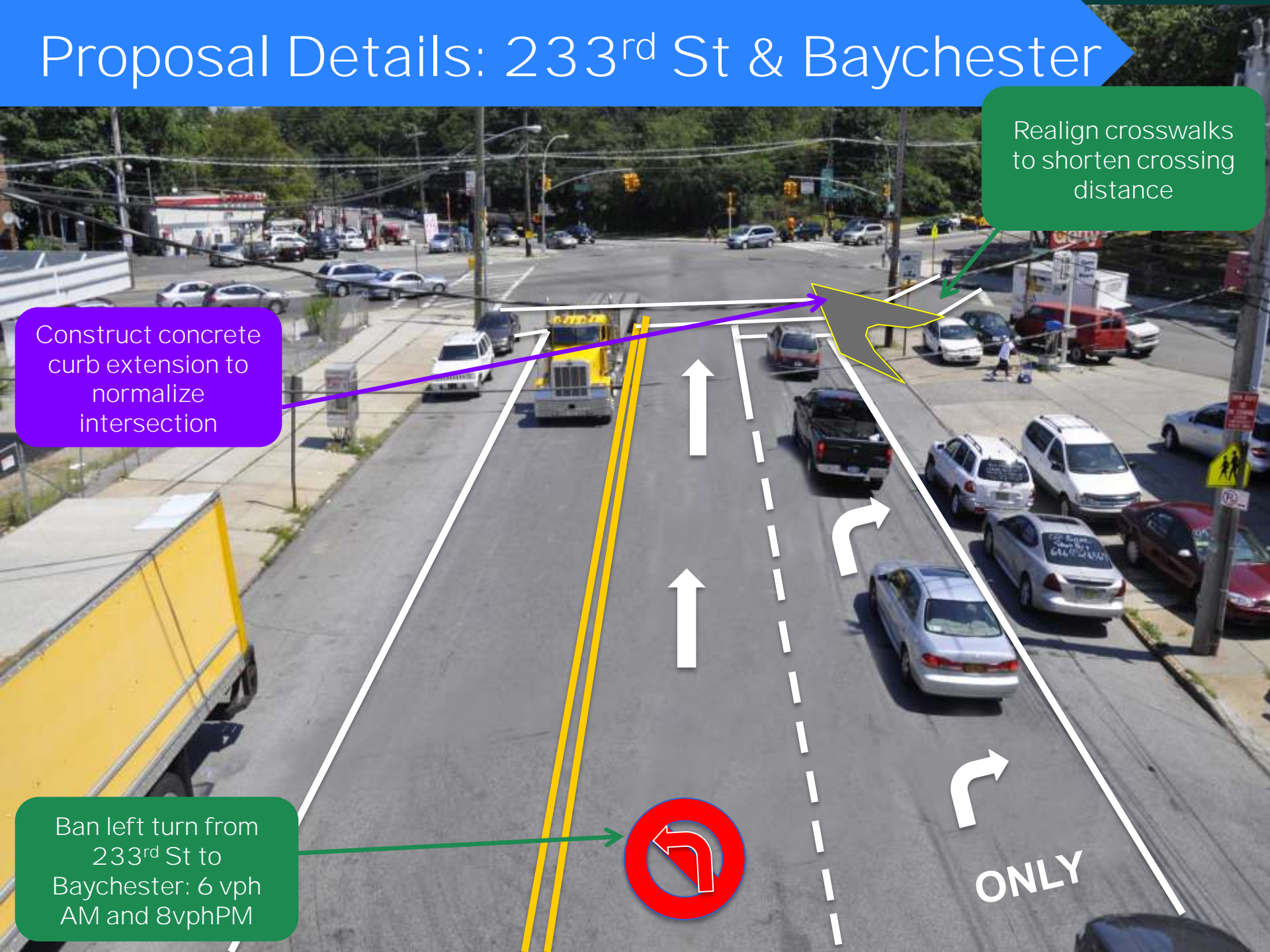
Realign crosswalks to shorten crossing distance

Construct concrete curb extension to normalize intersection

Ban left turn from 233rd St to Baychester: 6 vph AM and 8vphPM



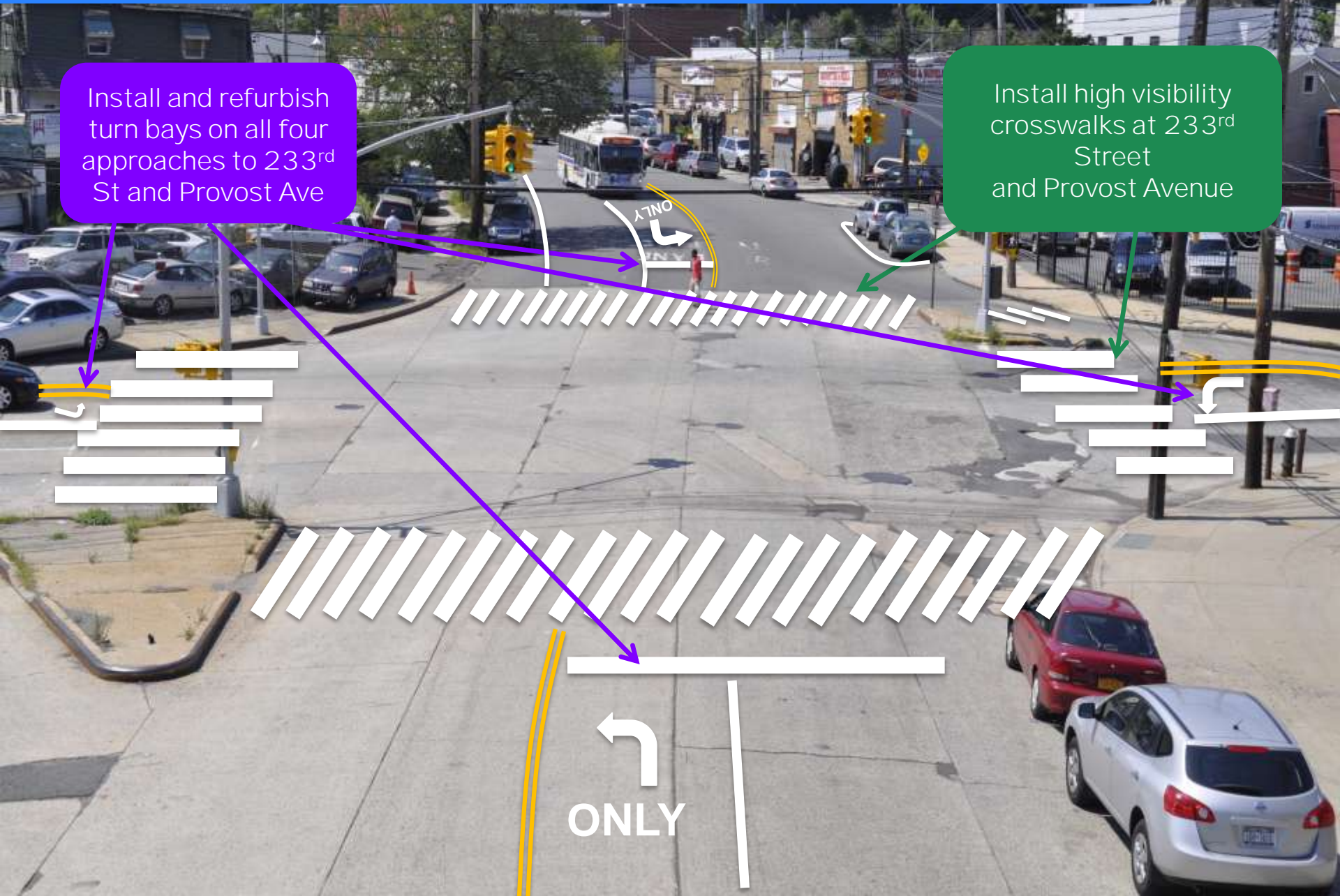
ONLY



Proposal Details: 233rd St & Provost Ave

Install and refurbish turn bays on all four approaches to 233rd St and Provost Ave

Install high visibility crosswalks at 233rd Street and Provost Avenue

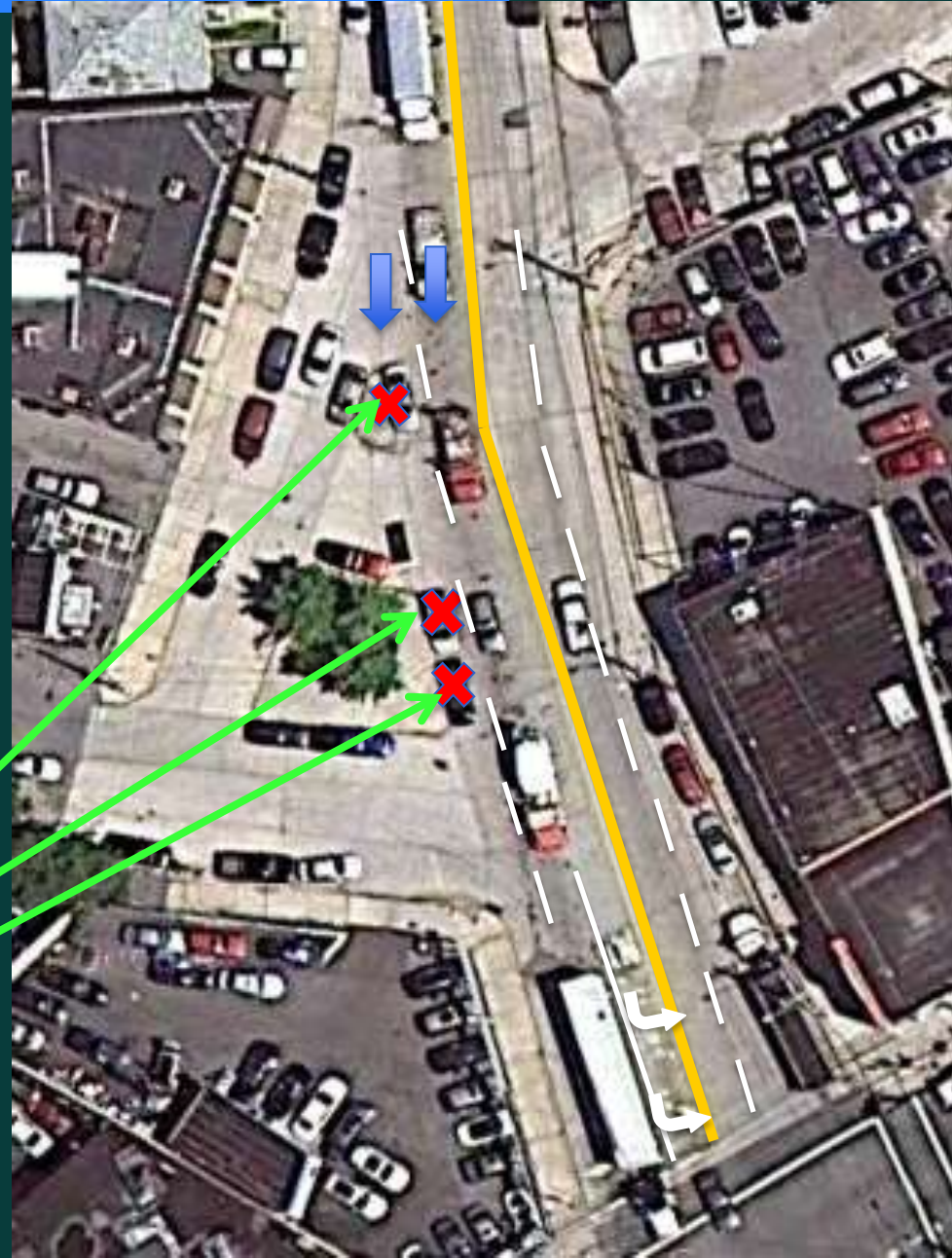


Additional Details: Provost Ave

Install 13-ft parking lane stripe between Light St and Clementine St to better organize traffic flow



Remove 3 parking spaces to add dual approach lane to Boston Rd and relieve queuing



Additional Details: Connor Street



Substandard road: Convert to one-way traffic only, east bound for vehicle and pedestrian safety

Benefits of Proposal

- Reduces speeding and calms traffic
- Provides safer pedestrian crossings
- Creates simpler, safer left turns
- Redesigns 1.25 miles of High Crash Corridor



Proposed Conditions: Linden Blvd, Brooklyn



Questions?



Thank
You

Contact:
Bronx Borough Commissioner's Office at (212) 748-6680 or kkalb@dot.nyc.gov